



University of
Nottingham

UK | CHINA | MALAYSIA

MSc Environmental Leadership and Management



Contents

Our course	2
Nottingham city	4
Why study with us?	6
What you will learn	8
Career and professional development	12
Global footprint	14

Become a leading force for change

The MSc Environmental Leadership and Management is designed to develop environmental leaders who are equipped to drive and direct change in organisations, in order to address the profound environmental challenges of our time.

It is ideal for anyone who aspires to be a leader who can generate positive change for the environment, both within organisations and broader society. Its dual focus on scientific and people skills ensures students are prepared to lead in roles that include sustainability management, environmental consulting, green policy development, and environmental entrepreneurship.

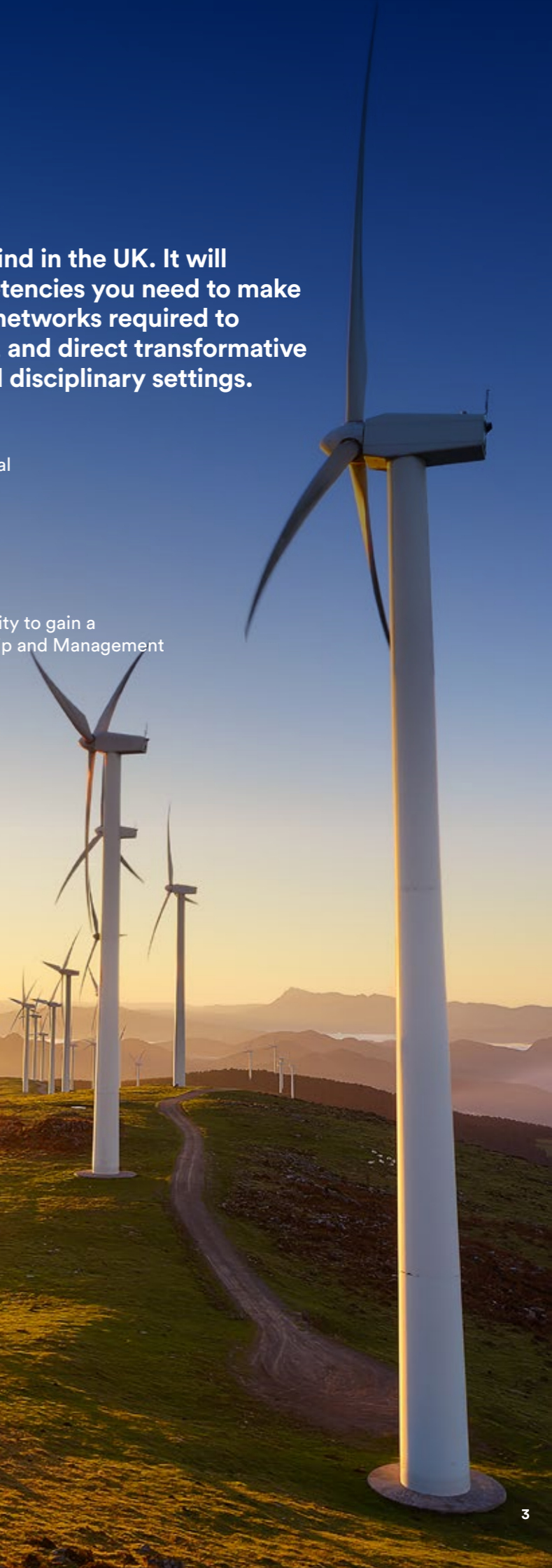
Governments must be dynamic in their response to changes in global industry. In an effort to shift to a more environmentally-sustainable economy, China will invest 2.5 trillion yuan in renewable energy between 2017 and 2020, creating more than 13 million new jobs.

This programme is one of the first of its kind in the UK. It will develop the knowledge, skills and competencies you need to make a difference. It will help you to forge the networks required to deliver practical environmental solutions, and direct transformative change in diverse social, professional and disciplinary settings.

- Its unique features include:
- Opportunities to engage with experienced environmental leaders from industry and commerce
 - A focus on the development of skills-based competencies needed for employment
 - The ability to tailor your degree to a specific environmental specialism
 - Alongside your MSc studies, you will have the opportunity to gain a Level 5 Certificate awarded by the Institute of Leadership and Management

“Never before has environmental leadership been so important for the future health of our planet and for future generations. We need individuals with the skills to bring about change and the courage and humility to lead.”

Stephanie Hilborne OBE,
Chief Executive,
The Wildlife Trusts



A city with sustainability at its heart

The city of Nottingham is a great place to work and study. Home to a world-class university, it is a culturally diverse and thriving city with a strong sense of community and a commitment to ecological innovation.

Both Jubilee and University Park Campus are close to the centre of Nottingham which, as the commercial and cultural capital of the East Midlands, is home to several major employers, including Walgreens Boots Alliance, Experian and Capital One.

Nottingham is an old city with a rich history and a forward-thinking culture. There has been significant investment in the development of an eco-friendly public transport system, and visitors can explore the many green spaces including Wollaton Park and the world-famous Sherwood Forest.



Time to travel

Getting here is easy. Nottingham is less than two hours from London, with excellent transport links to the capital and the rest of the UK.

East Midlands Airport, one of the UK's fastest growing airports, is only 40 minutes from the city centre via a 24-hour bus service.

Birmingham International Airport is less than one hour from Nottingham by car.

Frequent rail services run from Nottingham to major UK cities, including London every 30 minutes. The Eurostar connection at St Pancras International in London allows you to travel from Nottingham to Paris or Brussels in just a few hours.



Why study with us?

Discover our global connections

The University of Nottingham is a member of the prestigious Russell Group.

It is the place where the MRI scanner was invented, where you'll find the world's largest group of human rights scholars and where the answers to global environmental challenges are being unearthed.

With campuses in the UK, China and Malaysia, the University of Nottingham has a global reputation for teaching and research excellence.

The University of Nottingham has been recognised as delivering a Gold standard in the Teaching Excellence Framework (TEF). TEF is based on rankings/outcomes for student satisfaction, student retention and graduate employment.

TEF Gold

The UK's top university for sustainability



44,500
students
from over
150 countries

97%
of our research
is internationally
recognised
Research Excellence Framework, 2014



A research portfolio in excess of £600m



The School of Geography is based on the beautiful University Park Campus – a 300 acre oasis with long-established woodland, contemporary gardens and a lake. Every year since its launch in 2010, the UI Greenmetric World University Ranking has ranked the University of Nottingham no.1 in the UK for sustainability, and no.1 in the world on four occasions.

MSc Environmental Leadership and Management

There is growing recognition that addressing environmental and sustainability challenges requires a unique combination of fundamental knowledge, practical problem-solving skills and interpersonal competencies.

All of these essential elements are integrated within the MSc Environmental Leadership and Management, and it is this distinctive holistic approach that will provide you with the skillset critical for success in this field.

Personal capacities to lead

You will identify and develop the character and personal competencies necessary to be an effective environmental leader. Through practical experience, you will learn to utilise your leadership, communication and management skills to be a change driver in a competitive organisational context, whilst also championing the environment.



Gaining environmental knowledge

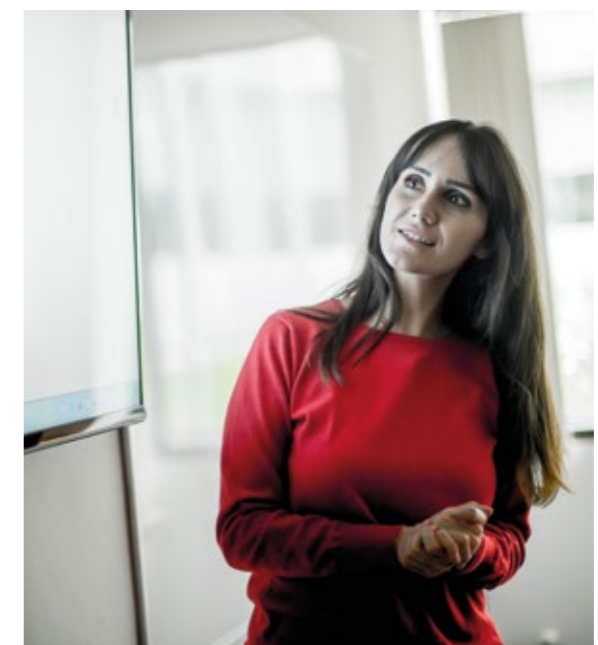
You will develop a deep understanding of the key environmental and sustainability challenges facing the world today, such as water quality and supply, clean air, climate change, urbanisation, biodiversity loss and sustainable energy resources.

You will be exposed to cutting edge scientific and social science thinking about how to measure, analyse and address these challenges.



Developing skills for environmental problem solving

You will develop your ability to analyse information so that you can make sound judgements, find innovative solutions and take achievable actions that will meet the needs of organisations and the environment. You will gain the skills necessary for identifying, evaluating and mapping environmental challenges, visioning solutions and strategising pathways for change.



An inspirational curriculum

The programme content has been designed to develop your capability to solve complex and diverse environmental challenges, and bring about effective change.

A broad knowledge

The core curriculum will give you an understanding of fundamental environmental processes and the ways in which contemporary environmental decisions are made. You will develop as an informed, environmentally aware leader who is ready to be an effective agent of change and influence within organisations.

Core themes could include:

- Leadership
- Sustainability
- Environmental processes
- Decision making in an environmental context
- Research methods
- Project design

Essential leadership and management development

The programme also incorporates ILM tuition delivered in collaboration with GWA Ltd - an ILM Approved Centre. It will result in the professional qualification of a Level 5 Certificate in Leadership and Management. The ILM tuition will include an intensive four-day teaching block in the autumn semester, plus supported assignment and project work undertaken alongside your MSc studies. It will cover topics such as:

- Leadership styles
- Motivating and influencing
- Planning and managing change
- Innovation
- Project planning and managing



Valuable practical skills

Through the completion of a research dissertation with an emphasis on environmental practice, you will also acquire the skills needed for effective design of environmentally focussed research projects and decision-making tasks.

The dissertation can either be a traditional research dissertation supervised by an academic from the School of Geography, or it can be a placement-based dissertation co-designed and undertaken in partnership with a relevant organisation (for example, environmental NGOs; environmental consultancies; government agencies; environmental research centres and more). This experience in an organisational context will help to demonstrate your abilities as an effective environmental leader to future employers.

Opportunity to specialise

In addition to the core curriculum, you may also specialise in a specific area of environmental challenge that aligns with your personal career aspirations, by selecting an individual pathway covering issues such as:

- Climate risk
- Water resources
- Sustainable ecosystems

Within each pathway, the teaching and learning is designed to develop theoretical and applied knowledge alongside practical competencies, so that you become equipped to be a leader that can manage specific contemporary global environmental challenges and their impacts. Your degree award will identify your area of specialisation, ensuring employers can be made aware of your skills.



A career that will make a difference

Our MSc Environmental Leadership and Management will help you to effect genuine change and to meaningfully contribute to your organisation's sustainability agenda.

A recent Goldman Sachs study* highlighted that China is set to invest 2% of its GDP into addressing its environmental challenges – creating new employment opportunities for those capable of leading the necessary changes. By developing your leadership skills in tandem with specialist knowledge you will be able to address today's most pressing environmental challenges, as well as create strategies to tackle future problems. Your skills as a solutions-orientated specialist will enhance your career opportunities and employability across a range of sectors including government, private industry and NGOs.

As a student at the University of Nottingham you will also benefit from lifelong careers support from our award-winning Careers and Employability Service. They will help you explore and plan your next career move through regular events, employer-led skills sessions and one-to-one discussions.



*Goldman Sachs (2015). *China's Environment: Big Issues, Accelerating Effort, Ample Opportunities.*

Thinking of applying?

The first intake for the MSc Environmental Leadership and Management will be in September 2019, and applications open in September 2018. For more information about the course and to apply, please visit our website: nottingham.ac.uk/go/elm

Entry requirements

Applicants typically require a 2:1 (or international equivalent) in a suitable discipline. Please contact the programme director for more information.

English language requirements

For applicants whose first language is not English, we require IELTS 6.5 (no less than 6.0 in any element).

Academic English preparation and support

Accredited by the British Council for the teaching of English in the UK, the University's Centre for English Language Education provides high quality preparation and support. Our pre-sessional courses take your English language and academic skills to the level you need to progress to postgraduate study without taking IELTS again. Find out more at nottingham.ac.uk/cele

A support network built around you

The University of Nottingham provides a wide range of support services for postgraduate students. You will have access to the University's Graduate School – a dedicated facility offering support and guidance. It offers induction events, training opportunities, funding, careers support and social and sporting events. Find out more at nottingham.ac.uk/graduateschool

nottingham.ac.uk/go/elm

The University of Nottingham has a unique global footprint, with campuses in China and Malaysia.

Our Malaysia campus spans 125 acres and provides a self-contained neighbourhood village within a garden environment.

The China campus, pictured here, is located in the Ningbo Higher Education Park and features lush planting, rivers and lakes that attract many different types of birds and wildlife. Our Centre for Sustainable Energy Technologies (CSET) was the first zero-carbon building in China and emphasises our focus on environmental sustainability in our research and practice.





**University of
Nottingham**

UK | CHINA | MALAYSIA

For more information, please visit our website:

 **nottingham.ac.uk/go/elm**

This brochure has been drafted approximately 18 months in advance of the academic year to which it applies. While every effort has been made to ensure that the information contained in this brochure is accurate at the time of going to press, changes are likely to occur given the interval between publication and commencement of the course. It is therefore very important that you check our website for any updates before you apply for the course. Where there is a difference between the contents of this brochure and our website, the contents of the website take precedence.

© University of Nottingham 2018. All rights reserved. Printed October 2018.