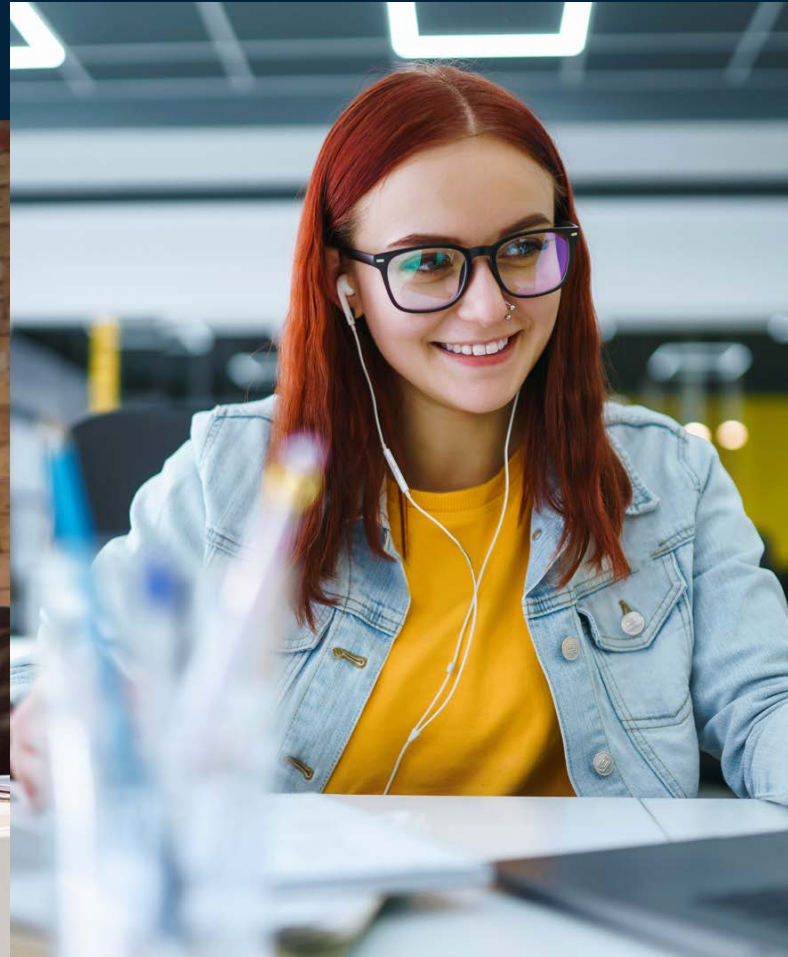




Nottingham University  
**Business School**  
UK | CHINA | MALAYSIA

# Placements, projects and dissertations at Nottingham University Business School



## Overview of placements and projects

At Nottingham University Business School, we are proud to support hundreds of students each year who work nationally and internationally on a variety of placements – both at undergraduate and postgraduate level.

Placements can be an excellent way to help your organisation grow, increase your capacity and enable you to take on new projects and challenges.

Our **undergraduate** students have the opportunity to undertake a one-year placement, while our **postgraduate** students are available for short term projects, placements and in some cases partner with a business to undertake their dissertation.

	Undergraduate	Postgraduate
<b>Duration:</b>	Students spend <b>9-13 months</b> in industry during their placement	<b>Short term</b> placements and projects
<b>Timing:</b>	<b>June to September start date</b> , after the second year of their degree	Flexible
<b>Type of opportunities</b>	<ul style="list-style-type: none"> <li>Placement year</li> </ul>	<ul style="list-style-type: none"> <li>Company based dissertation</li> <li>Part-time/short term projects</li> </ul>

### Benefits of hosting our students:

- access to skilled students bringing fresh ideas and perspectives to your workplace
- short-term boost to capacity and resource, allowing your organisation to tackle more projects
- meet and develop potential future recruits

### Our students have undertaken a wide variety of roles relating to:

- Business operations
- Finance, Accounting
- Human resources
- Project Management
- Consultancy support
- Research and analysis
- Sales
- Supply Chain
- Marketing and PR
- Social media, website and digital communications
- Events management
- Strategy development

## Undergraduate placement years at Nottingham University Business School

Through our Undergraduate Placement Year Programme we work with hundreds of businesses each year. We are always keen to work with new organisations and develop new innovative partnerships. Our dedicated Undergraduate Placement team can support you in your search for talent.

Our placement team provides support with:

- monthly check-in call
- meetings with the student and their line manager
- direct point of contact for employers and students while on placement
- pre-placement training
- placements awards – recognising outstanding contributions



## How does it work?

Students are employed by the host organisation for the duration of the placement, usually on a fixed term contract lasting between nine and thirteen months.

Companies provide a job description that outlines the details of the role, such as provisional start dates, location, duration, and any desirable/essential criteria. We advertise the position and invite applications via our university website, or through your own platform.

If required, we can help schedule and offer space to hold interviews. It is up to you how many students you want to shortlist.

The student then works for you for the year, with support provided by the university.

### September

- Companies begin advertising for placements
- Students begin applying for placements

Sep Oct Nov Dec Jan Feb Mar Apr May Jun Jul Aug Sep

### September to July

- Students go through your recruitment process
- Offer of contract

### May

- Student completes university training and processes

### July to following September

- Student starts a 9-13 month placement with your company as a full time employee
- Students work on set projects/tasks
- University reaches out to the student monthly

## Case study

# Nifemi

While on placement with Druck in 2023, our BSc Finance, Accounting and Management student Oluwanifemi (Nifemi) Idris was honoured with a Care Award for exceptional leadership in supporting the Black Employee Network during her placement year.



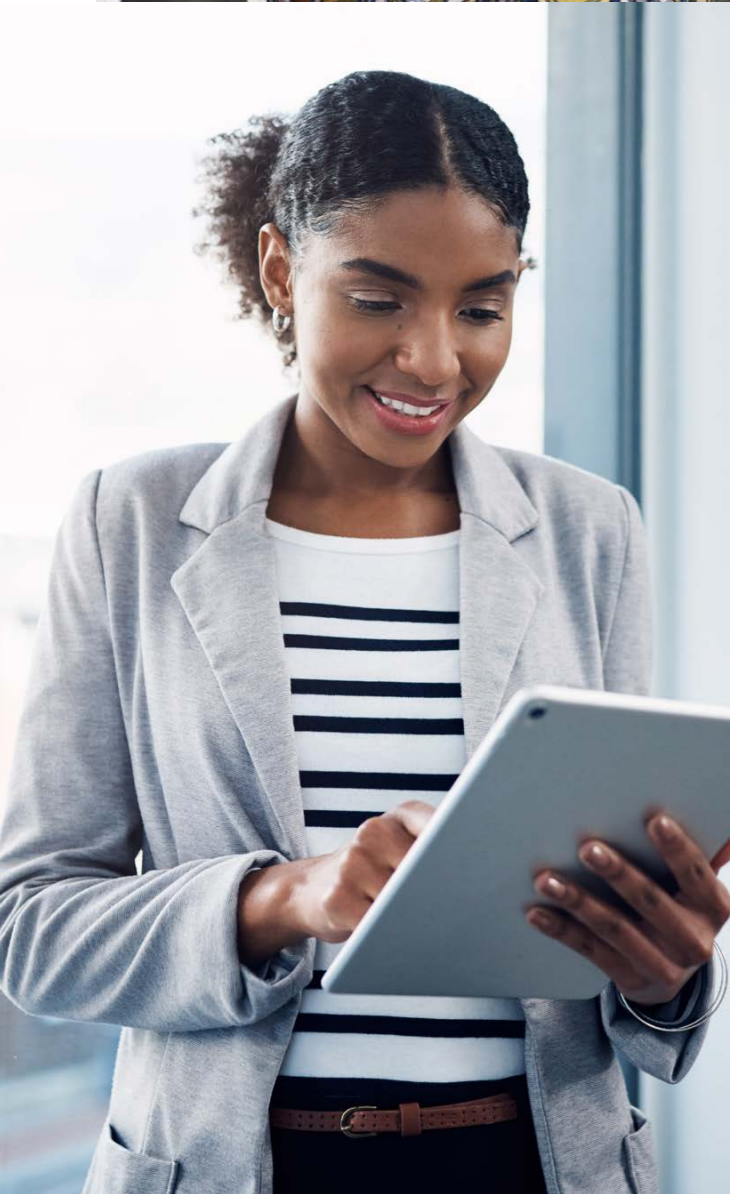
“Nifemi has brought her dynamism, enthusiasm, open-mindedness, and diligence to Druck, learning her role rapidly and volunteering for other activities too. She has been recognised for her efforts by our Vice President as well as dozens of others at work. She is a great asset, and we hope she’ll join us full-time one day.”

Charles Lawrence, Senior Quality Manager, Druck

Nifemi further contributed by delivering a presentation on the significance of Diversity, Equity, and Inclusion (EDI) in the workplace, providing historical insights to enlighten and empower colleagues.

“My placement was one of the best decisions I have ever made. I have been allowed to grow and express my ideas in a supportive environment, with my amazing team and colleagues at Druck. I am constantly learning new things each day and I cannot wait to see what’s to come. Receiving the award has been a very encouraging incentive for me to perform better and do more for the organisation and myself.”

Oluwanifemi (Nifemi) Idris, BSc Finance, Accounting and Management



Over the last five years, Nottingham University Business School has provided support to over 300 placement students, working on a variety of projects nationally and internationally with some of the largest organisations in the world.

“Our highly sought after students continue to undertake placements to not just accelerate their own careers, but to have true impact on businesses across the UK and abroad. Whether it be implementing new processes, adding additional support, or identifying your next talent – the benefits of placements can truly help transform businesses”

Jack Kavanagh,  
Placement Year Manager

## Postgraduate placements

### Bespoke placements and projects for postgraduates.

You can develop your organisation, enhance a project, or take a fresh look at your business processes with our high impact, cost-effective postgraduate placement and project offering.

Our internationally diverse students draw upon the skills and knowledge from their postgraduate courses to contribute to your business, while gaining valuable work experience.

Placements and projects can take place throughout the year and for varying lengths of time. Students can be based at your premises, work remotely, or take a hybrid approach.

Benefits to you:

- access to skilled postgraduate students from a world top university who join us from across the globe, bringing with them a range of language skills and cultural expertise
- a cost-effective way of getting additional resource, working with postgraduate students, equipped with the latest theories and practice

Placements and projects are an ideal way to test a candidate's suitability for a longer term or permanent position with your organisation.



## Company based dissertations

A company dissertation is a great way to gain support on a specific business objective or issue from a talented MSc or MBA student equipped with the latest theories and practice.

Projects typically run during the summer (mid-June until early September). Academic specialists will help you to define the scope and agreed deliverables for your project, as well as to recruit the best student for the project. Findings and recommendations are shared with you. The research outcome and insights can greatly benefit your business.

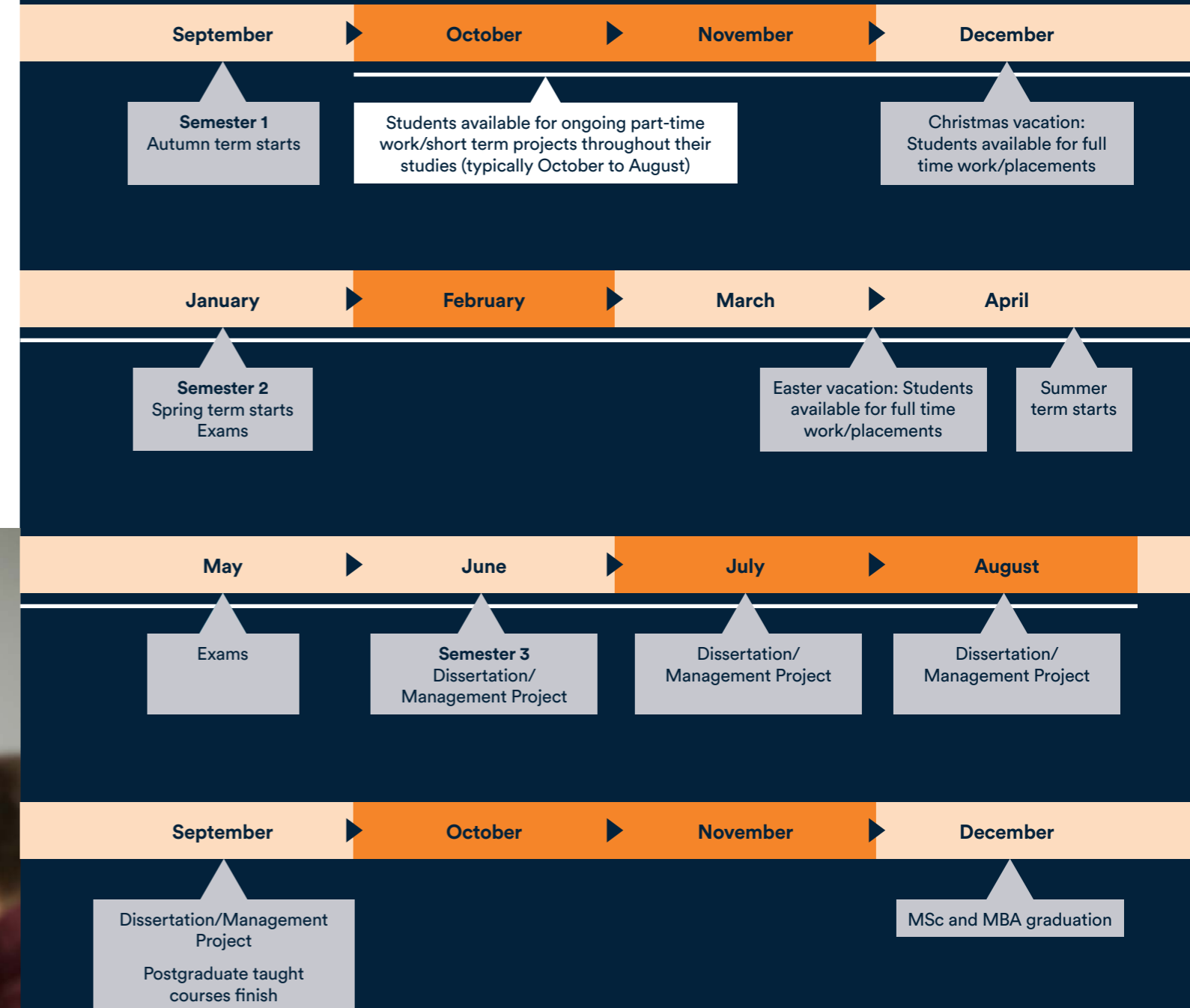
Projects are usually agreed by the end of January, so companies can assess applications and host interviews with students during February/ March ahead of the project starting in June.

**Ideal projects are those that allow our students to apply their learning to real business practice.**

Benefits to you:

- a new perspective on a business project
- support provided by an expert academic supervisor
- the opportunity to meet and network with high calibre graduates from a wide variety of backgrounds
- the only costs to you, are out of pocket expenses (travel costs, equipment etc)
- the opportunity to connect with Nottingham University Business School and benefit from our network

## MSc and MBA student timeline



## Testimonials

“During my postgraduate placement working for a technology solutions company, I managed their social media channels, created engaging content, and optimised their website. This experience allowed me to develop and implement a comprehensive digital marketing strategy. The skills and confidence I gained have been instrumental in securing my graduate role and have laid a strong foundation for my career in digital marketing. This placement gave me an edge over others as I gained substantial experience in the UK whilst pursuing my masters.”

**Anza Fatima, MSc Marketing**



“I have a long-standing relationship with the Nottingham University Business School Postgraduate Careers Team. Over the years, I have worked with the team to recruit numerous postgraduate students to work with me on various projects. I find the students to be motivated, innovative and of a high calibre, making a real impact on our business success. The postgraduate careers team have been

consistently supportive, approachable and focused on making the whole process as simple as possible.”

**Simon Graham, Head of Innovation,  
De Courcy Alexander**



## Digital Placements Programme

The University of Nottingham is equipping our students with the digital skills needed for the future. Through our Digital Placements Programme, you can access the next cohort of digital talent, to enhance your business and improve your capacity.

### Fast tracking early talent placements

We have students interested in digital (SAP) placements and graduate jobs. We make it easy for you to access our talented students through fast-track screening and interview process. Our placement team will match students with your requirements and organise an interview day, where you can talk to all suitable students in one visit.

For more information and to become one of our Digital Placement Partners, view the Digital Placements Partner Pack using this QR code.





Nottingham University  
**Business School**

UK | CHINA | MALAYSIA



**Find out more**



[nott.ac/company-placements](https://nott.ac/company-placements)

[NUBSPacements@nottingham.ac.uk](mailto:NUBSPacements@nottingham.ac.uk)

