

Kegworth Guide

Your essential **Students' Union** guide to everything Kegworth



Contents

Welcome from your Community Officer

Welcome from your Students' Union

Food and drink

One Kegworth

Sport in Kegworth

Your role as a housemate

Your role as a neighbour

Binformation and recycling

SU Advice: top tips

Get Involved: volunteer in your local community

North West Leicestershire District Council

Students' Union Advice

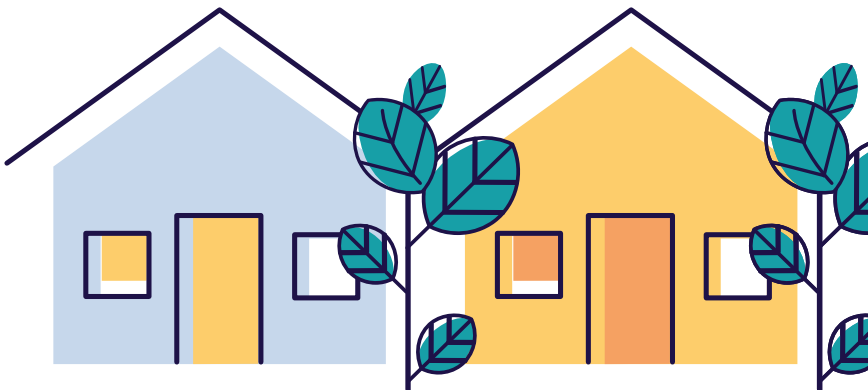
Health services

Off campus student affairs

Neighbourhood Help

Getting around Nottingham

Safety and security



Welcome from your Community Officer

“Hi, my name's Sofia and I'm your Community Officer for the next academic year.

My role encompasses looking after you in issues to do with housing, transport, being your representative to the local council, and much more. Moving out into the community can be an exciting and daunting experience and this year is going to look very different due to the current global climate, however your SU is here to support you every step of the way. I hope you enjoy your time living off-campus, and that you can make a positive impact on your neighbourhood. Remember, look after yourself; look after your Community!

Sofia Thomas

SU Community Officer



Hello! We are your Students' Union

We're an independent, student-led organisation that represents your needs, protects your rights and makes sure your voice is heard. Led by a team of elected SU Officers, we're a vibrant community 34,000 strong, made up of first-year students and PhDs, SU staff and volunteers. And you're automatically a member when you join the University of Nottingham.

Visit our website to find out more su.nottingham.ac.uk



Food and drink

There are so many great places you can go to tuck into tasty food and delicious drinks! Students living in Kegworth recommend:

Shops

Sutton Bonington

Pasture Lane Stores - general corner shop just past the King's Head

Kegworth

Co-op

Garage - off licence and general bits and bobs. (Closes 11pm/12 midnight)

Oaklands - meats and deli foods. It's also a café (which serves fantastic breakfast takeaways!)

Hidden Gem Kitchen - Café and takeaway

Supermarkets

ALDI (on the way to Loughborough) 15 minute drive

LIDL (in Loughborough)

Tesco delivery (super popular!)

ASDA (in Shepshed)

Morrisons (in Loughborough)

Takeaways

Sutton Bonington

King's Head (they do a takeaway collection service)

Kegworth

The Anchor Inn (Station Road) They do a takeaway/collection service

Chinese

Diamond City (closed on Mondays)

Zhen Garden (find them on Just Eat!)

(Both are next to each other on Derby Road, and both deliver)

Fish and chips

Kegworth Fish Bar (next to the garage)

Chippy

Kegworth Chippy (Derby Road, near Co-op. Super cheap!)

Indian

Jee Ja Jees (sit in or takeaway)

Pizza

Domino's (delivery or collection in Loughborough)

One Kegworth

One Kegworth is a group of like-minded people who want to bring Kegworth together as one. The committee is made up of village residents, business owners, professionals and University students who all love where they live.

We aim to organise a variety of events throughout the year including the Christmas in the Market Place, Easter Charter Market, One Kegworth event in June and a Picnic in the Park in summer.

By working with each other, we can bring the community together to have fun and try new things. One of our main aims is to support local businesses, clubs and societies to showcase the wide range of activities we have available in Kegworth. Our events are accessible and fun for everyone and are not to be missed!

Visit onekegworth.co.uk to find out more, or email hello@onekegworth.co.uk or check out our facebook page [@onekegworth](https://www.facebook.com/onekegworth)

Sport in Kegworth

Feeling sporty? It's a short trip to the Sutton Bonington Sports Centre and there are plenty of sports clubs and societies to get involved with on campus.

Fancy trying a new sport or picking up something from home? Visit nottingham.ac.uk/sport/facilities/suttonbonington

And that's not all! Kegworth has a number of local clubs you can get involved in too, including tennis club, karate, taekwondo, tai chi, equestrian, football, cricket, and clay pigeon shooting.

There's also King George V Playing Field and grounds available to the cricket, football and tennis clubs, as well as a green bowls club. So there's loads to keep you active!

Your role as a housemate

Sharing a house with your friends is something you'll always remember from your time at University – and as a housemate, you'll play a role in making sure shared living is a fantastic experience.



Here are some day-to-day practicalities to help you have the best time:

As soon as everyone has moved in, **create a rota** of all the chores and tasks the whole household will have responsibility for. Whether that's washing up, cleaning the bathroom or putting the bins and recycling out, decide as a group who does what and when.

And when something isn't quite right, avoid passive aggressive notes and revenge tactics; **it's super important to talk to each other!**

Spend time together. Organise something social that involves everyone in the house – maybe a movie night or making homemade pizzas together.

SU Advice says: Have a chat with your housemates about visitors and acceptable noise levels. It's good to talk this through early on to make sure you all agree on house rules.

Your role as a neighbour

Kegworth has a population of around 3,700 residents, and about 640 of these are students. So you'll be part of an established and diverse village community, which might include living next to a young family or older people. Your role as a neighbour is really important as you can look out for each other, get to know new people and feel more at home where you live.

Things you could do:

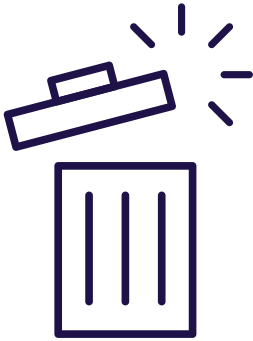
Say hello! If you're friendly and approachable, you're much more likely to have a positive relationship with your neighbours.

Ordering a taxi? Remember to ask the driver not to sound their horn when they arrive as it can disturb your neighbours. And wait inside for the taxi to arrive to avoid noisy gatherings on your doorstep.

Heading out for the night? Be considerate of sleeping residents and keep the noise down as you walk into town and head home at the end of the night.

Want to have your say in how your local authority is run? Remember to register to vote: [gov.uk/register-to-vote](https://www.gov.uk/register-to-vote)

Binformation and recycling



- Keep on top of your waste and use the correct container
- Download your bin calendar so you don't miss a collection day
- Take your bins off the street as soon as they've been emptied
- Support the environment by recycling as much as possible.

Recycle plastic shampoo
and cleaning product
bottles in your red box...
#recyclemore



 Recycle
more...

Find all the information you need at:

nottingham.ac.uk/go/generalwaste

nottingham.ac.uk/go/recycling

SU Advice: top tips

Follow SU Advice's top tips to keep your home clean, tidy and comfortable.



- 1** Always keep the house clean. Think about drawing up a cleaning rota - it's a good way to prevent squabbles with your housemates!



- 2** Make sure you **heat and air** the house properly.



- 3** Check smoke alarm batteries every week and **change lightbulbs** when you need to.



- 4** Be careful what you put down **your sink and toilet!**



- 5** Check if you have responsibility for **maintaining the garden**, as some contracts specify that you do.

Want to take a look at the full Moving In Guide?

su.nottingham.ac.uk/advice/housing-advice/moving-in

Get Involved: volunteer in your local community

There's always loads going on in your local community, so why not use your free time to volunteer for causes that matter to you?

Check out the different types of opportunities and find something to suit you:

- Ongoing projects
- Student-led projects
- One-off volunteering
- Micro volunteering



Want to volunteer but
don't know where to start?

Our Volunteering team are happy to help!
Email volunteering@nottingham.ac.uk or visit
su.nottingham.ac.uk/volunteering for information
about local opportunities in your area.

North West Leicestershire District Council supporting students

North West Leicestershire District Council is your local authority and as a local citizen you have access to a whole host of information and services.

- Bin collections
- Recycling and refuse
- Improving your environment
- Community safety
- Housing
- Your local councilors
- Community support and advice
- What's on
- Leisure services
- Parks information
- Markets



To access all this information

Visit nwleics.gov.uk and twitter.com/NWLeics for the latest news and events

Your Students' Union Advice team

Students' Union Advice provide free, impartial advice and information to all University of Nottingham students.

Independent of the University, the Advice team is made up of permanent members of Students' Union staff and our service is completely confidential.

We provide information and advice on a wide range of issues affecting students such as:

Housing advice – house hunting, contracts, deposits, issues with landlords, disrepair, disputes with housemates etc

Money advice – funding, debt, budgeting, benefits and tax credit etc

Course advice – extenuating circumstances, academic appeals, complaints, student code of discipline etc

Hate crime – we are a hate crime reporting centre



Get in touch

E: suadvice@nottingham.ac.uk

T: 0115 846 8730

Office: C floor, Portland Building, University Park

You can find out more information about our service at
su.nottingham.ac.uk/advice




University of
Nottingham
UK | CHINA | MALAYSIA


A great community starts with great people. Keeping the noise down, the streets clean and looking out for our neighbours is how we make this a great place to live.

“ Hello, neighbour! ”



Find out about off-campus living:

 nottingham.ac.uk/yourcommunity

 @UoN_Off_Campus

Health Services

Orchard Surgery

The Dragwell, Kegworth,
Derbyshire DE74 2EL

T: +44 (0) 1509 672 419

W: kegworth.net

Cripps Health Centre

University Park
Nottingham NG7 2QW

T: +44 (0) 115 846 8888



Off campus student affairs

Many of you choose to move off-campus to areas like Kegworth during your time at University. We have lots of info, advice and guidance available to support you when you become a member of your local off-campus community.

This includes guidance on what it takes to manage your private home, advice on being a good neighbour and ambassador for the University, as well as important information on crime prevention and safety. Our team are here to help you make the most of living in your local community.

Visit nottingham.ac.uk/yourcommunity to find out more.

Neighbourhood help

The University expects students to act in accordance with the **University Code of Conduct** and to be ambassadors for the University. If you find an occasion where this isn't being observed please contact us via our helpline. This 24-hour helpline offers you and local residents the opportunity to let the University know about any issues of concern you may have. Please leave a message about anything from noisy neighbours to uncollected rubbish.

Messages are quickly dealt with, but this isn't an emergency helpline.

0115 846 8666

Alternatively, please email offcampus@Nottingham.ac.uk

Parking in Kegworth

Parking spaces are in really short supply in Kegworth, so please think of others if you have a car with you – particularly if you have more than one car in your household. Try not to park on the pavement as it can cause problems for people who use wheelchairs and pushchairs.

Kegworth Parish Council

If you want advice on local matters, to find out about events or to pick up a Neighbourhood Watch pack, pop into the office on 1 London Road or call **+44 (0) 1509 670204**.

Find out more and check opening hours kegworthparishcouncil.gov.uk

Public Transport

- You can catch the **Sutton Bonington 901 Hopper bus** from University Park campus
- The most useful public transport is the **Skylink**, which goes from Leicester to Derby, usually every half an hour to hour. Check out their website for up-to-date timings
- **Train:** East Midlands Parkway station is a few miles away. From here, you can catch the train to London and Nottingham



Taxi

Sometimes a taxi is the best option.

We've joined forces with **UNICAB** to bring you the Safer Taxi Scheme so that you'll always be able to get home safely.

Text UNICAB to 80818
or call +44 (0) 115 950 0500

to use a **fixed price list** or the **emergency taxi** scheme.
For more information visit <https://unicab.app>



University of
Nottingham

UK | CHINA | MALAYSIA

Stay safe together

Stick together to enjoy a safe night out.
Don't leave your friends.



Out for the night?
Talk about where you're going and who with

Carrying cash and valuables?
Use inside pockets and zipped bags

Need a lift home?
Only get licensed taxis

You'll be able to access fixed rates by booking your taxi through Unicab on 0115 950000. Get on the fixed price list by texting UNICAB to 80818. unicab.app

Walking home?
Stay in your group and stick to well-lit main streets



Safety and security

- Want to know what's happening in your local area? Sign up for Police Neighbourhood Alerts: neighbourhoodlink.co.uk
- Register your valuables for free with Immobilise.com
- SU Advice top tips: **Keep the property secure** – use the window locks and burglar alarm (if you have one) and keep your front door locked as much as possible
- If everyone is hanging out in the top floor bedrooms, make sure you lock the front door
- Don't leave laptops, phones, keys or other valuables in reach or view of an open window

Find lots of safety and security advice at: nottingham.ac.uk/go/cityofsafety



Love your stuff



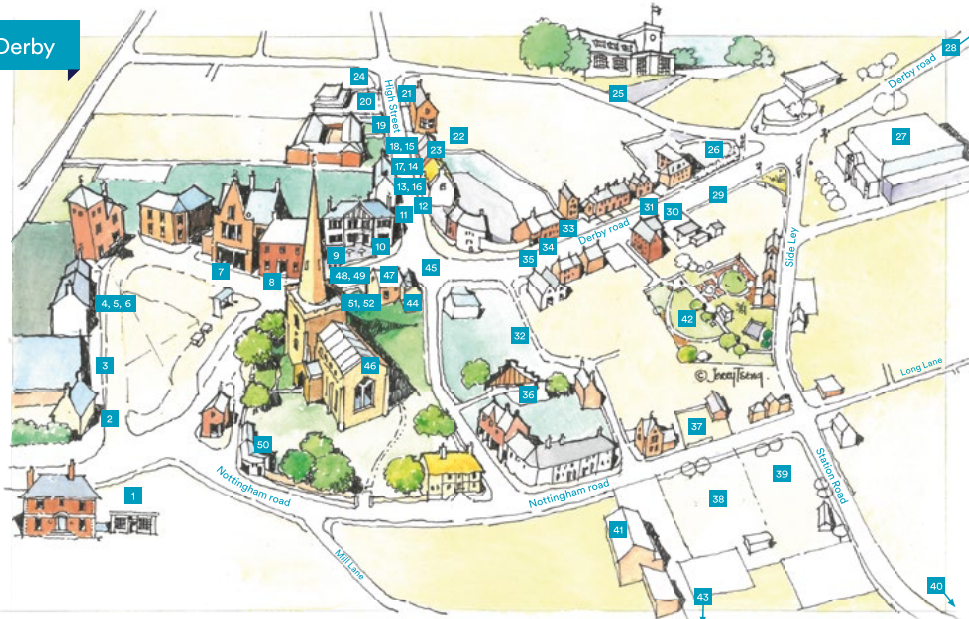
“51% of all burglaries in areas where students choose to live are through unlocked doors or open and insecure windows”
Nottinghamshire Police 2019

Don't become a statistic

Check your doors and windows are locked when you go out or go to bed.

Register your valuables for free at the national property register:
immobilise.com

Kegworth, Derby



1. Kegworth Parish Council Offices
2. Tonic Hairdressers
3. Co-Op and Cash Point
4. Soar Trading – Local produce and Equine provisions
5. Barbers
6. Physio
7. Crane and Wells Micro Pub
8. Je Jaa Jees – Indian Eat in and Takeaway
9. Thomas James Estate Agents and Tassi Lettings
10. Oaklands deli, butchers and cafe
11. Cafe
12. The Cottage Restaurant

13. Geda construction
14. Red Lion Pub
15. The Baptist Church
16. The Methodist Church
17. Coach House Pub
18. Hairdressers
19. Kegworth Primary School
20. Kegworth Library
21. Kegworth Heritage Centre
22. Kegworth Nursery
23. No 42 Restaurant and Kegworth House Hotel
24. Redstart serviced accommodation
25. Best Western Yew Lodge Hotel and Marco Pierre White

26. Kegworth Hotel and Conference centre
27. Refresco
28. Paintballing
29. Kegworth Post Office and Chip Shop; fuel
30. Chinese take away Diamond City
31. Chinese Takeaway Zhen Garden
32. Cap and Stocking Pub and Food
33. Kegworth Chippy and Pizza
34. Tattoo Shop
35. Flowers by Frederika
36. Doctors Surgery
37. Kegworth Bowls Club
38. Kegworth IMps Football
39. Kegworth Cricket Club

40. Anchor Pub
41. Kegworth Village Hall
42. Sideley Park
43. Long Lane Equestrian
44. Boots
45. Gastill Dog Grooming
46. St Andrews Church
47. Arka Sight Care
48. Lovage Estate Agents and
49. Cutting Cottage Hair
50. RiRi Beauty
51. MRvapes
52. Homelet

Follow us:

Twitter: [@UoNSU](#)

Facebook: [@UofNSU](#)

Instagram: [@uonsu](#)

su.nottingham.ac.uk

Created in Partnership with:

The University of Nottingham,
The Guild and One Kegworth