



University of  
**Nottingham**

UK | CHINA | MALAYSIA

# Jubilee Campus Landscape Management Plan 2025-32





<b>Contents</b>	<b>1</b>
<b>Summary</b>	<b>3</b>
<b>Section 1: History and development</b>	<b>5</b>
<b>Section 2: Landscape composition</b>	<b>10</b>
2.1 Lakes and wetland, Phase 1 and 2 (Innovation Park)	10
2.2 Conservation areas	15
2.3 Horticulture and amenity landscape	17
2.4 Jubilee Conference Centre	20
<b>Section 3: Activities and Facilities</b>	<b>25</b>
3.1 Leisure provision	25
3.2 Jubilee Sports Centre, Triumph Road	26
3.3 Play areas	28
3.4 Sculpture	28
3.5 Signage and information	29
<b>Section 4: Safety, security and cleanliness</b>	<b>32</b>
4.1 University health and safety	32
4.2 Estates health and safety	32
4.3 Tree safety	33
4.4 Jubilee Campus Security team	33
4.5 Cleanliness	35
4.6 Maintenance of water features	35
4.7 Spillage of oil in lakes – emergency procedure	35
4.8 Waterfowl management	36
4.9 Gritting, snow and frost clearances	36
4.10 Dog fouling policy	37
4.11 Management of tall vegetation	37
4.12 Graffiti	37
<b>Section 5: Maintenance and resources</b>	<b>38</b>
5.1 Staff team	38
5.2 Current Landscape & Grounds Management arrangements	39
5.3 Landscape & Grounds quality monitoring	39
5.4 Key contacts and organisational chart	40



5.5 Machinery and equipment.....	41
5.6 Machinery replacement.....	42
5.7 Machinery servicing and repair .....	42
5.8 Landscape & Grounds training and development .....	42
5.9 Street furniture .....	43
5.10 Recycling units.....	45
<b>Section 6: Environmental Management .....</b>	<b>46</b>
6.1 Energy and renewables .....	47
6.2 Transport.....	48
6.3 Waste minimisation .....	48
6.4 Grounds waste .....	48
6.5 Chemical use .....	49
6.6 Peat use.....	49
6.7 Climate Change Adaptation .....	49
6.8 Biodiversity.....	51
6.9 Management strategies.....	52
6.10 Tree surgery .....	53
6.11 Water conservation.....	53
6.12 Nature positive universities .....	53
6.13 Hedgehog Friendly Campus.....	53
<b>Section 7: Conservation and heritage.....</b>	<b>54</b>
7.1 Geology and soils.....	54
7.3 Landscape planning .....	54
<b>Section 8: Community involvement .....</b>	<b>55</b>
8.1 Community access and involvement.....	55
8.2 Community groups .....	57
8.3 Marketing .....	59
<b>Section 9: Jubilee Campus – Grounds action plan 2025-32 .....</b>	<b>60</b>
How will we get there? .....	60

## Summary

This management plan follows a previous plan that was produced to cover the period from 2017-22. This is a seven-year plan that covers 2025-32.

The plan intends to bring together the management, maintenance and development of Jubilee Campus, in an overall framework. The plan is intended to be both a working document and a reference document. A working document in that it contains actions and timetables that will need to be implemented and reviewed, and a reference document in that the plan does not contain every piece of information needed to run the campus. It provides references to other documents, policies and strategies and explores their implications for the campus. As such, the plan must be read in conjunction with these documents to manage, maintain and develop the campus.

The revised plan has been brought together by the following staff:

- Lead Officer: Greg Smith, Landscape & Grounds Manager with assistance from:
- Dale Coates, Operational Grounds Maintenance Manager
- Connie Parr, Operational Grounds Maintenance Manager
- Peter Bullimore, Operational Grounds Maintenance Manager (Sport & SB)
- Alex Martindale, Team Leader for Jubilee Campus
- Gavin Scott, Environmental Manager

The plan is intended to be read by managers, staff and visitors to Jubilee Campus. In the plan there is a strong emphasis on sustainability in the built environment and landscape which will be noted later in this plan, the concept of the development regeneration of a brownfield industrial site with a strong emphasis on sustainability, energy conservation, habitat creation, biodiversity and community access.

## Location

Central Nottingham locations in walking distance to University Park are Queen's Medical Centre and Nottingham city centre; by bus to Jubilee Campus. First initial phase opened by Her Majesty Queen Elizabeth in 1999.

## Postal address

University of Nottingham  
Jubilee Campus  
Wollaton Road  
Nottingham  
NG16 1BB

For directions, go to:

<https://www.nottingham.ac.uk/about/visitorinformation/mapsanddirections/jubileecampus.aspx>

If using satellite navigation, use NG8 1BB as the postcode for Jubilee Campus and NG7 2TU for Innovation Park.



Jubilee Campus is completely open on almost all sides, there is unrestricted public access along the length of Triumph Road, other entrances include:

- Orston Road South end of the site, pedestrian and cycle
- Wollaton Gate NE corner of the site pedestrian, cycle and vehicle
- River Leen and a new Lake footbridge East boundary of the site Middleton Boulevard Access NW corner of the site, pedestrian and cycle
- Middleton Boulevard Access NW corner of the site, pedestrian and cycle

Freedom of access by the local community is encouraged, ample outdoor seating, an area of field to the south of the site used for informal games by students and visitors, and four hard surface tennis courts.

The site has 24-hour security provided by the university, with many CCTV cameras operating throughout the site and at each entrance which are illuminated at night. Each year before autumn Winter, the Operational Grounds Manager Team supports Security by carry out an evening walk of the campus together with students to identify areas that are poorly lit or have over-hanging trees. Poor lighting issues are addressed.

Several new buildings have met the BREEAM (Building Research Establishment Environmental Assessments Methods) Excellent or Outstanding Awards. In terms of landscape infrastructure around the buildings, a consultant ecologist has been involved in the landscape design and cafes, a sports centre with 4G artificial pitch, four cafes, a sports centre with 4G artificial surfaces.



*Gate House – originally the gate house to Wollaton Park. This now forms part of the Derby Road entrance to Jubilee Campus.*

## Section 1: History and development

1. The university acquired the site in 1995.
2. 1999 Jubilee Campus phase 1 is Complete opened By Her Majesty Queen Elizabeth.
3. 2007 Jubilee Campus expansion is under construction.
4. 2022 Jubilee Campus further expansion.

The East Side of Triumph Road is referred to as an Innovations Park. Development commenced in 2007. The site includes the Energy Technologies Building and Nottingham Geospatial Institute Building, the Aerospace Technology Centre and Institute of Mental Health, the latter resides alongside the University Sport Centre and opened in 2012 which is a Costa Coffee. To increase the ecological value, new bird boxes were located on walls to the east of the main building. Sustainable building initiatives also include vehicle electric charging points and covered cycle stores to encourage sustainable traveling.

In 2016, two further buildings were completed, the Ingenuity 62<sup>nd</sup> Nottingham (Wollaton Park) Scout Group building and the more notable Carbon Neutral Laboratory for Sustainable Chemistry.

In December 2017, the Advanced Manufacturing Building was completed which is a 9,000m<sup>2</sup> state-of-the-art building on Derby Road providing a new south entrance to Jubilee Campus. As part of the project, a new Scout was constructed on the campus to replace former building.

In 2014, the Romax building was completed, located on Innovations Park. Romax has incorporated environmentally friendly buildings technologies within its move, such as sustainable constructions techniques including biomass heating, building heat recovery and reuse, wastewater recycling, solar shading and biodiverse green roof. It has achieved BREEAM Excellent rating.

The Jubilee Campus site and surrounding area has a long industrial past. In 1883 it was the site for Radford Colliery in 1883. The Nottingham canal ran through it until it was abandoned in 1954. By 1996 it had been culverted, and no evidence remains today except only in the underpass at the north entrances to the site.

There was a school on site from 1901 which was demolished in 1990 for site development. Triumph Road, North Entrance also a gasworks which were also demolished in 2010 on Wollaton Road stood John Player factory 3 huge bond warehouse buildings they were demolished in 2022 they are in the process of being developed by the university.

In the 1960s, bicycle manufacturing occupied most, if not all the site. Their factory workshop took up most of the area in and around Jubilee Campus and the Radford area. In the 1990s these factories were slowly closing, moving to a more modern site at Eastwood in Nottinghamshire. Other business remained up until 2015-20 – Dairy Crest Milk Distributors Centre and a car repair workshop. The initial Jubilee Campus Phase 1

development was completed in 1999. The former Raleigh factory site was developed to design by Michael Hopkins with landscaping by Battle McCarthy. The initial 5.4 hectares included two lakes and building associated with the School of Education, the Business School, and School of Computer Studies.

Subsequently to that, a third lake, together with National College of School Leadership building was constructed in 2001 This is now known as Jubilee Hotel & Conference Centre situated on the west side of Triumph Road.

In 2007, development commenced on the next phase of the development – International House, the Amenities Building on the west of Triumph Road and Sir Colin Campbell Building which crosses the re-aligned road.

This development includes 280 meters long, paved boulevard with water features, and an avenue of sixty trees.





## The Development of Jubilee Campus, 65 acres

- The university acquired the site in 1995
- 1999 Jubilee Campus phase 1 is completed. Opened by Her Majesty the Queen.
- 2007 Jubilee Campus expansion under construction.
- 2022 Jubilee Campus further expansion.



*Sunset at Advanced Manufacturer Building*





### *Ingenuity Centre*

University of Nottingham Innovations Park Ingenuity Centre is Campus, situated adjacent to the River Leen on former Raleigh site it is a three-store building.



### *GSK Carbon Neutral Laboratory*

The University of Nottingham, in partnership with GlaxoSmithKline (GSK), set about to deliver a carbon neutral laboratory building. The building was constructed to achieve both LEED Platinum and BREEAM outstanding status. Throughout every stage of the project, from its inception to completion, great care was taken to minimise the impact of the building on its environment (both in the local wider contexts). The laboratory is built from natural materials, and energy required to run the laboratory is met by renewable sources such as solar power and sustainable biomass. Excess energy created by the building provides enough carbon credits over 25 years to pay back the carbon used in its construction.



The building occupies 4,500 square metres over two floors. In addition to laboratory space for around 100 researchers, it contains dedicated instrument rooms, a teaching laboratory for advanced undergraduate classes, and space for a range of outreach activities.

The Landscape & Grounds department carry out in-house work alongside local contractors to maintain the 12 green roofs across Jubilee Campus.



The Research Acceleration and Demonstrations building (RAD) was completed in 2018, a £5.4m research facility. at the University of Nottingham, in conjunction with the Energy Research Accelerator (ERA) initiative. The RAD building is one of the most energy efficient research facilities in the UK as it combines the rigorous sustainability standards of BREEAM with the principles of the German Passivhaus System. There is also a green wall located in the atrium of the building.

## Section 2: Landscape composition

The site divides primarily into lakes, wetlands, conservation areas and amenity areas, together and associated buildings, roads and car parks.



### 2.1 Lakes and wetland, Phase 1 and 2 (Innovation Park)

The first two lakes in the initial development form an integrated drainage system with the whole site. These collect all the drainage systems from roofs of building and car park through and via a system of ditches linked to the to the main lakes through 450mm pipes that run under the building, the levels of such that enter the ditches from the car parks is trapped within the ditches. Only when rainfall is excessively high does the lake reach its upper maximum, and drainage water leaves the system via a weir to the flood water drainage system. The lakes extend to 14,500,000m<sup>2</sup>.





### *Jubilee Conference Centre*

There are a series of pumps that circulate the water throughout the system. At the Melton Hall end this is in a clear flow pattern, with the lake water being pumped into the ditch at a higher level and passing over a series of small weirs and then back to the upper lake.

Another pump collects water from the lower lake and pumps it into the top lake where it drops over a weir and back to the lower lake. It is pumped into the main lake to the ditches to avoid water becoming stagnant. All pumps are controlled by a time clock to work during daylight hours and are regularly serviced.

The lakes also include a series of aerators operated from compressors and mounted on the western side of the lake. This allows air to be introduced into the water as needed. Growth of algae and water temperature are monitored to decide on the operation of these.



Lake 3 by Jubilee Hotel and Conference Centre is a system on its own and is connected to a moat in front of the building. The main lake is divided by a wide weir and water is pumped from the lower level up to the higher level. This lake is topped up automatically with water from a borehole.

Marginal plantings have been successfully established around all lakes and include the ditches – these are generally left undisturbed. Dead growth each autumn is left to decay naturally providing a range of habitats. The only exception to this are the more formal areas of the ditches where annual cutting back takes place at some future stage when there may be a need to reduce the encroachment of vigorous species.

Attempts to establish water lilies were less successful and despite three attempts this remains largely unsuccessful except on the small lake by Melton Hall. On each occasion, ducks have destroyed the plantings despite protection in the last 12 months. In the middle lake area we have seen Sign of alternative floating aquatic amphibious bistort (*Polygonum amphibium*) and fringed waterlily (*Nymphaea peltata*) will be trialled in submerged cages.

A variety of waterfowl have colonised the lakes including swans, ducks, coots, moorhens, herons and inevitably Canada geese. Most of these are successfully breeding. Populations of Canada geese are controlled by egg picking. The public are discouraged from feeding wildfowl.





A small quantity of Koi carp were introduced to the main lake following a request from a neighbour. In addition, many wild carp have appeared, and these have multiplied to the extent that they have become a nuisance making the water murky and diminishing wildlife by eating amphibian eggs and small invertebrates such as dragonfly larvae. Some were relocated in summer 2022 and in time repeated with removing much of the fish possibly again in 2025.

Blanket weed and algae have been a problem since the inception of the lakes. The shallow depths of water, coupled with the occasional use of portable water for topping up, gives ideal conditions for algae growth. To alleviate the problem, various products were also originally used together with herbicide applications under license during initial stabilizations.

In recent years, this has been replaced with the use of barley straw which keeps algal growth at a reasonable level in all, but extremely hot weather 2023-24 barley has not been used as not required. Duckweed has developed in the ditches but so far has not spread to the main lakes with a range of other aquatic plants present, chemical control is neither desirable nor feasible. Excess quantities are removed by hand in summer.





*The middle lake at Jubilee.*



*Southern marsh orchid*

## 2.2 Conservation areas

When Jubilee Campus was developed, the university was able to purchase a narrow ribbon of land that contained existing mature trees. These include ash, lime, sycamore, alder, willow and plane. Maintenance is minimal and restricted to safety issues and problems associated with nuisance to adjacent properties. This area is an important barrier between the campus and the residents. Access to it is limited, meaning that it gets little disturbance. As part of the initial landscaping, additional native trees and shrubs were added, and these are now largely well established. Bird boxes have been added to the older trees in this area and some habitat piles established across Jubilee Campus.



Grassland under these trees is managed on a meadowland basis with annual cut in August/September and removal of mown material. An attractive and diverse sward is developing. Paths are mown through this to allow walkers to use the area although usage is not high as there is no clear route through. A series of mounds were also constructed behind the lakes. These were initially turfed and planted with wildflower plugs. They are mown annually in August/September. Native trees and shrubs together with ornamentals attractive to wildlife were added to soft the outlines of these mounds.

Jubilee Lake landscaped area at the Si Yuan Centre was built in 2008.





As part of the development of the Jubilee Hotel & Conference Centre site, a new meadow was also seeded to the west of the lake. Land here is built from the pulverised remains of the old factory buildings which provided a poor-quality substrate which has been highly successful in providing the low nutrition levels that promote rich grass and herb content in meadow grass communities. Common orchids and bee orchids flourish in some areas of the site. 26,000 cubic meters of processed rubble from factories and low-grade subsoil was used to create the substrate.



## 2.3 Horticulture and amenity landscape

Both phases of Jubilee Campus have limited areas of amenity landscape. In phase one, tree planting included a high proportion of horse chestnut and various whitebeam trees.

There are strong blocks of boundary planting that are now well established. The spine roads and associated car parking are well planted with a mix of deciduous and evergreen ornamental shrub. Establishments of grasses and broad-leaved species were slow, but a valid meadow now exists that is attracting many species, including blue butterflies. This too is mown annually. No herbicides or fertiliser are used in any of conservations areas.

There are two gravelled courtyards with planting and seating and grassy courtyards within the Southwell and Newark Halls of residences.

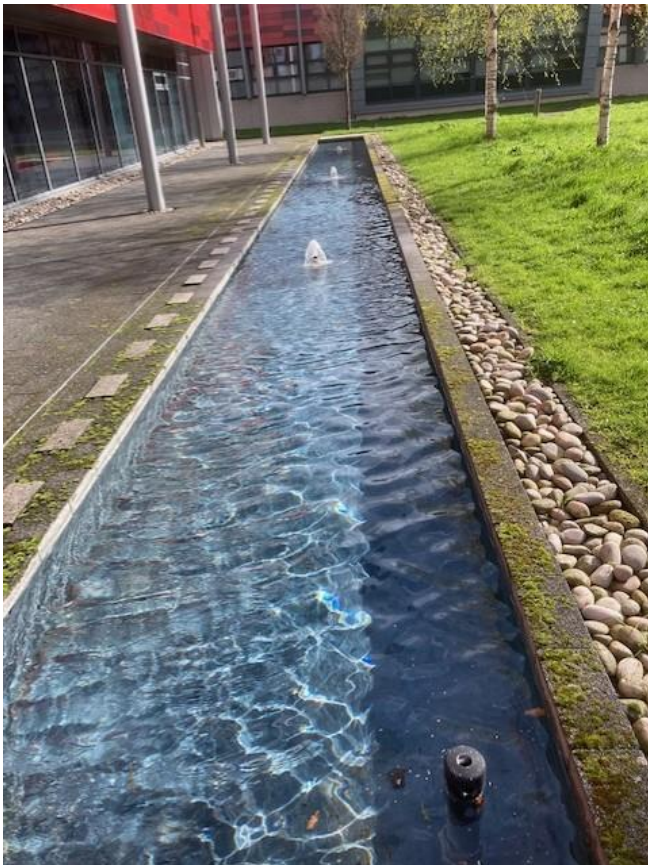
Trees are fed on an annual basis with slow release fertiliser. Amenity planted areas are now mulched regularly and the use of residual herbicides has been suspended.



*Small courtyard alongside the lakeside boulevard*

Amenity grass areas are mown on a seven/ten-day cycle and arisings grassing cuttings are not collected. All these areas are maintained by the university's Grounds team using established techniques.

The first phase of this development is dominated by the boulevard boardwalk, a paved walkway which separates the building from the two larger lakes. This is swept, scrubbed jet washed on a regular basis. Bins for general waste and recycling are emptied daily by the university's external cleaning team of five, which form part of Grounds team. They also litter pick the site.



Phase 2 of the campus development includes the boulevard linking west and east sides of Triumph Road with a avenue of *Sophora Japonica* and linked to fountains, within a marble finish paved surface.

The Innovation Park landscape to the east of Triumph Road, also has strong features of biodiversity and sustainability with extensive planting of native trees and shrubs, species



rich meadow turf supported with five years management plans written by a consultant ecologist (this can be seen in the appendix of this report).

The overall concept is of open flowering meadow with tree groups being native trees and shrubs within amenity grass areas.



*Tree and shrub planting area at GSK Carbon Neutral Laboratory building*



## 2.4 Jubilee Conference Centre



The Jubilee Conference Centre Building has a more extensive area of landscape around it and backs onto a grass sports area. Some of the species originally included here, such as native brambles, were over aggressive and had to be removed. The boundary planting here, although successful in terms of screening, is dominated by , which needs thinning or to allow slower species, such as holly, to develop their full potential.

This area in turn joins a small sliver of rough grass and trees that runs down to the back of the old gatehouse on Derby Road. The area is given low maintenance with monthly grass cutting and tree maintenance for safety only.



*Jubilee Scout Hut (withing walking distance to the Gate House)*

### **Jubilee Campus – Phase 2 (Innovations Park)**

The second phase of this development on land on both sides of Triumph Road embraces the same principles of sustainability. Similar elements have been included, which should

give time be equally successful in providing a range of habitats, which will stretch right across to the River Leen to the east of the site.

Attention has been given to improving the biodiversity of the site. Planting includes both exotic as well as native species. This is entirely appropriate considering the international status of the university and the inclusion of the Yang Fujia building within this current development. In very general terms, landscaping to the west of Triumph Road and around the boulevard is more amenity based and blends to a conservation style to east of Triumph Road going towards the new water feature and the River Leen.



### **Amenity areas**

The landscaping around the buildings will be amenity based with combinations of good landscape plants including trees, shrubs, groundcover plants and prairie style planting.

### **Boulevard**

This formal paved feature stretches for 280m from phase 1 across to phase 2, straddling the Triumph Road. This is a high-quality hard landscape complete with granite paving, a series of canals fountains and granite seating. The Boulevard of sixty Sophora Japonica, the Chinese Scholars Tree These were planted.

### **New Lake/River Leen**

The water feature acts as a focal point at the end of the boulevard and a link with adjacent River Leen. The lake itself is and has been complemented with a pebble beach that wraps around the end of the paved boulevard, that itself stretches across the whole site. The lake and its beach is surrounded by a small area of mown grass, which links the boulevard. In 2023 renovation work was completed to re-stone (20 tons in total). The beech was also reinforcing the mean brain to the beech area was carried out.



## Car park areas

Car park areas are planted with shrubs and trees.



*Water feature at the Si Yuan Centre, built in 2012.*



## Lake edges

Around the lakes edges there are native aquatics such as marginal planting of water mint, marsh marigold, reed mace, purple loosestrife, soft rush and yellow flag iris. These were established using pre-planting coir rolls or direct planting into a substrate. The native white and yellow water lilies, fringed waterlily, and a range of submerged oxygenators will be included within the body of the water.

It is noted that the River Leen is a stronghold for water voles. The nature of the existing river bank with steel sheet piling means that the river surrounds are unlikely to be disturbed. The sides of the new lake is soft engineered using coir rolls to provide a habitat for water voles. The new lake was filled with water from the River Leen rather than potable water. A pedestrian/cycle footbridge was added to cross the lake in 2012.





## Section 3: Activities and Facilities

### 3.1 Leisure provision

Jubilee Campus is an open space campus which allows access for local residents who arrive on foot, in vehicles or bicycles. The lakes get a large number of visitors and dog walkers. The cafes are open to the general public and people also picnic on the campus. Different kinds of sports are played on Charnock Field, and student groups organise seasons of informal games on the grass area on Wednesday afternoons and other evenings in the week.



The three tarmac tennis courts are also heavily used at all times of the day by students and locals as the courts are not secured. There has been a policy of free access to them since they were renovated in 2018 and are not lockable.





*Charnock Field tennis courts*



*Aspire – outdoor seating area*

### **3.2 Sports Centre, Triumph Road**

The Sports Centre provides facilities to approximately 14,000 users from the university community of students, staff and public and local sports clubs. Professional teams also use the indoor and outdoor facilities including full size artificial 3G surfaces which opened in 2015. The Sport Centre is open seven day a week, 7am-10.30pm. The centre is accessible to wheelchair users. Students, staff and the general public pay an annual membership fee which gives them access to all other sports centres on our campuses.



*Outside area, Jubilee Sports Centre*



*3G artificial surface flood lights*



*Indoor facilities*

### **3.3 Play areas**

There are no formal play areas for children at Jubilee Campus, and it is unlikely that children play areas would be adopted by the university. However, all open space is accessible to families visiting the campus.

### **3.4 Sculpture**

The Aspire Sculpture dominates the landscape of Jubilee Campus. The 60m tall, red and orange, steel sculpture weighs 854 tonnes and cost £800,000. It was designed by world renowned architect Ken Shuttleworth, who also designed the Gherkin Building in London. The Aspire is taller than Nelson's Column (51m) and The Statue of Liberty





The sculpture is called Aspire; a café located in the Amenity(46m) .the base of the Sculpture is set back from Triumph ,where there is a community seating area which is in Regular use by students and public.

### 3.5 Signage and information

Jubilee Campus is well signed from approach roads, cycle routes and footpaths. Site information is provided on green and silver boards and campus maps are displayed on the park.

The Security Gatehouse on Wollaton Road acts as a welcome and information point for visitors; plans and other information is available from the Security team 7.30am-4.30pm.

There is a main Security office in the Exchange Building, which has a plan model of the campus to help visitors.



*Sign at Wollaton Road entrance*



*Jubilee Campus map*



*Signs around campus have been planted with wildflower seed to reduce the use of Glyphosate applications*



*Silver and black building sign*



*Estate and Landscape & Grounds hub at Jubilee.*



## Section 4: Safety, security and cleanliness

### 4.1 University health and safety

Health and safety are the responsibility of Line Managers and also individual staff.

Within the Halls of Residence, the responsibility is by the Director of Nottingham Hospitality and through their line management. These local arrangements form part of the university safety policy. The Safety Office has produced detailed documents which are used as the basis for all health safety and management within the university community.



### 4.2 Estates health and safety

The Estates department is aware of health and safety and has its own Safety Committee. The committee is comprised of representatives from all sections of the Estates team, including the Landscape & Grounds sections and a representative from the university's Safety Office. The committee has responsibility for overseeing all aspects of health and safety related to works undertaken by Estates.

The day-to-day responsibility for safe working practices within the Grounds Sections is devolved to the Grounds Maintenance Manager and Assistant Maintenance Managers. Risk Assessments and safe working procedures are in place for all tasks further to that.

The Landscape & Grounds Management team review and update all current Risk Assessments every two years. These are shared on SharePoint so teams can access them. We also share Grounds' policies and procedures with the team.

COSHH assessments are recorded and updated as necessary, as well as safety data sheets. This information is readily available for the Grounds section and staff who require the information. The university's Safety Office and Estates Safety Officers regularly review this information.

### 4.3 Tree safety

The current approach to tree survey management together with other university campuses is through an outside contractor on an annual bases. Tree surveys are carried out every 18 months to two years. Trees are recorded, marked and numbered, assessed and inspected. Work to be carried out is categorised into red, amber, and green zones with red equating to high risk down to low risk green. The surveyor makes this assessment which is logged on a handheld data collector. The Tree Survey report is collated, and work is progressed through the two Grounds team of arborists and/or outside contractors.

Out of working hours emergency works are carried out by tree contractors. They are contacted by the Grounds team or Security. The Grounds team have an 'Emergency out of hours call out procedure'.

### 4.4 Jubilee Campus Security team



The University Jubilee currently have in house security Team that look after Jubilee Campus 24/7 to support site security student and the public expernces of the Campus they also Deal with Contractors through locking down of Building & opening up of Buildings they also monitor the 54 security Cameras and carry out foot patrols of campus we have a Gate house on Wollaton rd entrances and security barriers. And Security offices is in Xu Yafan Building Jubilee Campus.



*Entrance barriers on Derby Road to allow vehicles on site with around 2,000 vehicle movements per day*

For a campus which is located within the city boundary, crime levels are relatively low with only minor small crime being reported. One small issue is the theft of motorbikes and bicycles. This has been reduced mainly due to lockable motorbikes/bicycle storage areas around campus. The Security team also provide best practices advice on all crime prevention which is available to staff, students and visitors.



*Lockable motorbike store*



## 4.5 Cleanliness

Jubilee Campus benefits from a frequency and performance basis cleaning and litter collections regime carried out by External cleaners

There is one full-time external cleaner, and outsourced road sweeping is covered by a contractor on a bi-monthly basis. There is a mobile university external cleaning team based at Jubilee Campus that can be called to support during busy periods such as student return, graduations, open days and annual holiday cover. The university has a litter free policy, which although is difficult to achieve, has for some years been highly successful. All collected litter is recycled under agreement with the main contractor, Enva, – aspects of which will be discussed under section 6 of this document.

There are ample external waste bins on Jubilee Campus, and many cigarette ash stands or combination bins, on all university sites.

## 4.6 Maintenance of water features

Two members of staff are now appointed to the Pond Team that look after the extensive range of water features on Jubilee Campus.

These comprise of:

- Ditches
- Four lakes 16,000m<sup>2</sup>
- Canal on the south side of Jubilee Conference Centre
- Lake fountains and aeration equipment
- Boulevard rills and fountains
- Institute of Mental Health rills and fountains
- Si Yuan fountain

The four water features, Institute of Mental Health Rill and fountains, Boulevard rills and fountains, Si Yuan fountain are attended to by the in-house team twice a week during October to March, and three times a week during April to September. On a quarterly basis, an external specialist attends site to service the plant/systems.

## 4.7 Spillage of oil in lakes – emergency procedure

The lakes and ditches at Jubilee Campus are designed that under most circumstances, an oil or petrol spillage will be retained in the ditches. It is of paramount importance that the lakes are kept at their correct level in order to prevent oil passing from the ditches into the lakes.

We adopt the pollution control hierarchy when dealing with any spillages – full details can be found in our emergency procedure for leaks and spills (available upon request) but in summary:

- Ascertain the extent of any spillage and notify the Environmental Manager/ Compliance Managers and Assistant Grounds Manager.
- Contain the spillage in line with pollution control hierarchy

- Contain close to source
- Contain on the surfaces
- Contain in the drain
- Contain on or in the watercourses

There is equipment available on site to be able to deal with containment of spills in this instance. Major spillages will utilise the experience of External Lab Waste Ltd.

#### **4.8 Waterfowl management**

Recommend levels of wildfowl populations advise 20 ducks per hectare and five geese per hectare. Canada Geese foul the grass areas and footpaths and present a continual problem for site users; their excrement also adds to biological pollutions in the lake.

It has been extremely difficult to exclude the Canada geese, and these are currently controlled by University Pest Control. Eggs are prevented from hatching by painting the eggs with mineral oil shortly after they have been laid and returned to the nest. The ducks' populations do not require control.

#### **4.9 Gritting, snow and frost clearances**

During the winter months of November through to end of March, snow frost conditions out-of-hours gritting is carried out By a Nurture Landscape Contractor through the gritting portal the management team at Grounds activate the visits to all sites.

clearances during the working hours of 7.30am 3.30pm are carried out by how in house team from when they start work of gritting foot path by hand with pedestrian gritters. We also carry out gritting with how too tractor trail gritters holding x 2 ton of material each normally gritting is completed of all the site by 10.30am.

If required, we would repeat the process in the afternoon before staff leave site for the day. We store all grit and bag grit under cover at the Jubilee Hub.



*Winter grit stored at Jubilee Hub*

When temperature are low, an 'out of hours' call out system is in operation through Nurture Gritting (part of Nurture Landscape). The Grounds managers receive a warning, and we then issue a confirmation that gritting needs to take place overnight on Jubilee Campus.

#### **4.10 Dog fouling policy**

The university do not have the power to enforce fines on dog owners. However, there are bins around Charnock Field for dog waste that is emptied daily as part of external cleaners' duties. We currently see much lower levels of dog waste/fouling. However, persistent offenders can be ask by Security to leave site – this can also be supported by neighbourhood police.

#### **4.11 Management of tall vegetation**

The Grounds & Landscape Team maintains tall vegetation at 1.2m-1.5m tall in the vicinity of footpaths and car parks. This reduces the likelihood of lurking places for criminals; fortunately incidents of physical threat are rare on Jubilee Campus.

Vegetation control is also carried out to enable the optimum function of security cameras (these have doubled in number to 57).

#### **4.12 Graffiti**

The university has a fast response to incidents of graffiti which can be reported through the Estates Helpdesk where works requests are raised. Response time can be stated non-urgent or urgent and dealt within 24 hours.

The Helpdesk is open to members of staff, students and public.



## Section 5: Maintenance and resources



### 5.1 Staff team

The Grounds team consists of an in-house team that are based at the Jubilee Landscape & Grounds hub. This building is shared with Jubilee Maintenance as an Estates campus hub.

- 1 x Assistant Grounds Manager
- 1 x Grounds Team Leader
- 3 x trained staff in amenity horticulture staff to NVQ level 2/3
- 1 x External Cleaner who carries out all external cleaning, litter picking, bin emptying with use of an Estates vehicle

The staff are present on site during each working day and are supported, with tasks by University Park, Team Aux, Pond Team, Arborist Team, External cleaners.

Technical and Managerial advice is available from the Grounds Management Team.

## 5.2 Current Landscape & Grounds Management arrangements

Works are carried out by the team at Jubilee Campus on a routinely basis.

### Operation overview of works undertaken

#### Grass cutting

- Amenity grassland cut every 7-10 days during mowing season. Street furniture will also be strimmed round (we have reduced weed killing these areas).

#### Hedge cutting

- Ornamental hedges are cut once or twice annually depending on species.

#### Paths and hard standing areas

- Maintained and cleaned if required with mechanical road sweepers. Can be used in some areas like the rills power washers are also used.

#### Weed killing

- Weed control is kept to a minimum. All surfaces are treated twice a year.

#### Litter removal

- The External Cleaner empties bins on a daily basis and litter pick daily, Monday to Friday. As students return each term, we carry out external cleaning during weekends and bank holidays.

#### Leaf collections

- Fallen leaves are cleared and removed during the autumn. All main areas such as roads, cycle paths and footpaths are cleaned.

#### Shrub beds

- The team works methodically throughout the campus to weed, and trim shrubs back during the growing seasons.

#### Grass

- Grass encroachment is removed from edges of paths and hard standing. Carried out annually as part of winter work programme.

#### Meadows

- Are cut top in early spring, and once again in September October.

Sports Centre 3G is maintained by Landscape Grounds Sport Team.

## 5.3 Landscape & Grounds quality monitoring

The team across all campuses including Jubilee, are encouraged to monitor the presentation of the area. At the same time, detailed inspections of the Team Leader's areas can be provided which forms part of health and safety area checks. Check sheets completed and collated. Team Leaders meet monthly with their Operational Manager. There is also a link up during the Campus Services Manager bi-monthly meeting.



## 5.4 Key contacts and organisational chart

### **Gregory Smith**

Landscape & Sports Grounds Manager  
Email: [gregory.smith@nottingham.ac.uk](mailto:gregory.smith@nottingham.ac.uk)

### **Dale Coates**

Operational Grounds Manager Jubilee Campus.  
Email: [dale.coates@nottingham.ac.uk](mailto:dale.coates@nottingham.ac.uk)

### **Connie Parr**

Operations Manager University Park  
Email: [connie.parr@nottingham.ac.uk](mailto:connie.parr@nottingham.ac.uk)

### **Peter Bullimore**

Grounds Landscape & Grounds Maintenance Manager—Sport Sutton Bonington  
Email: [peter.bullimore@nottingham.ac.uk](mailto:peter.bullimore@nottingham.ac.uk)

### **Alex Martindale**

Team Leader Jubilee.  
Email: [alex.martindale@nottingham.ac.uk](mailto:alex.martindale@nottingham.ac.uk)

### **Michael Wroblewski**

Aux Team Leader  
Email: [michael.wroblewski@nottingham.ac.uk](mailto:michael.wroblewski@nottingham.ac.uk)

### **Michael Mounetney**

Senior Arborist  
Email: [michael.mounetney@nottingham.ac.uk](mailto:michael.mounetney@nottingham.ac.uk)

### **Security**

Email: [Security@nottingham.ac.uk](mailto:Security@nottingham.ac.uk)

### **Security/Gatehouse**

Tel: 0115 82 6678

### **Security (24 hours)**

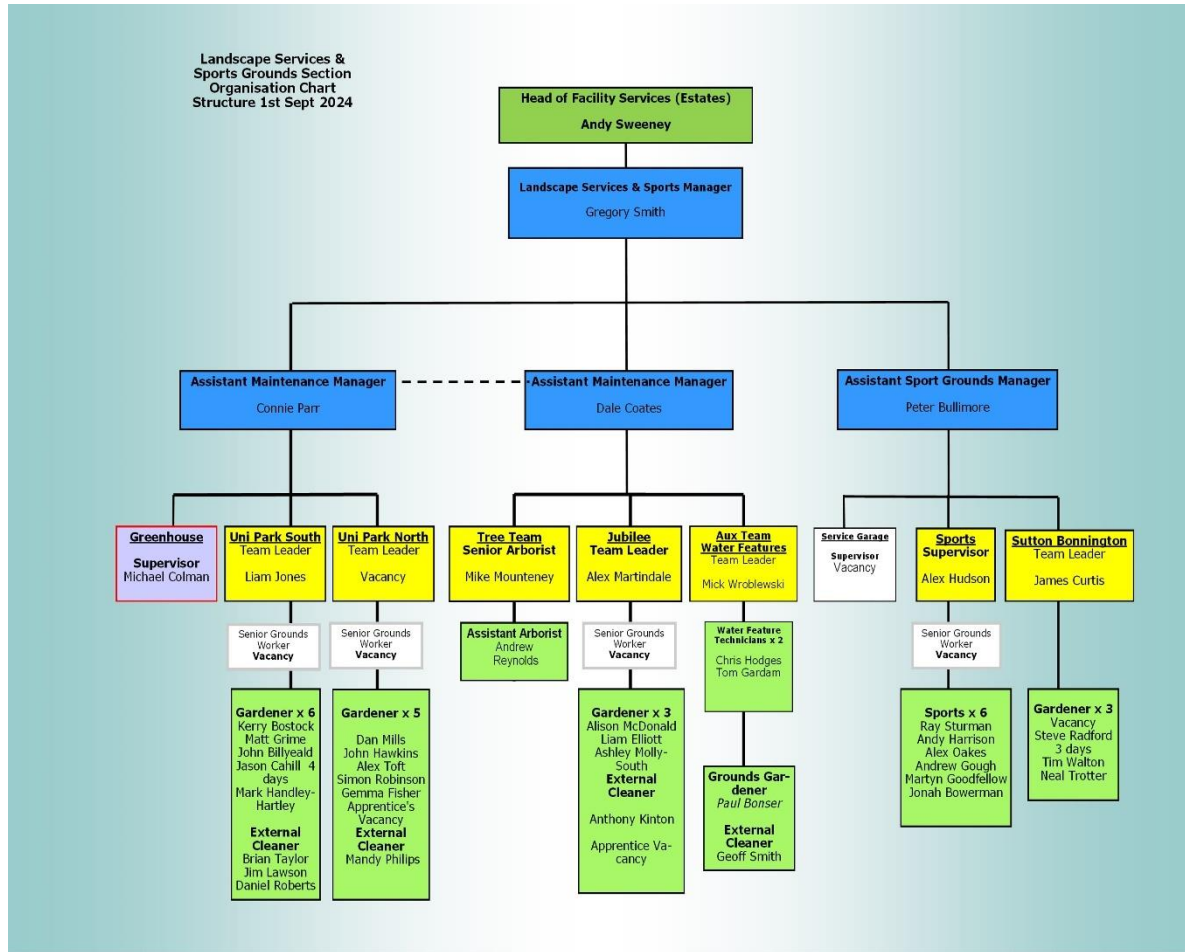
Tel 0115 95 13013

### **Security – Emergencies**

Tel: 0115 95 18888



## Organisational chart



## 5.5 Machinery and equipment

The Team at Jubilee Campus have the following equipment available for use on a permanent basis. The Grounds operations are supported by the Landscape & Grounds department when required.

### Jubilee asset list (small sample)

- Zago Eco Green C350T shredder
- 5 x Cooper Pegler 20/15 litres sprayer
- Marshall 8.5 ton agricultural trailer
- SCH 200 gallon water bowser
- 2 x Echo srm420-Tes strimmer
- Stihl Rm4RTP self-propelled-rotary mower
- Honda HRN536C2VKEH self-propelled-rotary mower
- Stihl HL94C long-reach hedge cutter
- 1 x Citroen flatbed vehicle
- Farmall Case L 100HP tractor
- 1 x Iseki ride-on compact tractor
- 1 x Jakobson 500HP ride-on mower

- Iseki SF551 ride-on rotary mower collector (leased)
- Tractor Case L Maxum 125 EP tractor (leased)
- Pond team equipment
- Numatics industrial wet and dry vacuum for water features
- 2 x water pumps
- 4m Honda Honwave inflatable boat for lake work

## **5.6 Machinery replacement**

There is an ongoing rolling program for all Landscape & Grounds team for replacement handheld kit. This runs alongside the ‘Hand/arm vibrations test’ report which is carried out annually each December by Earlsmere (they visit each Grounds team and test their hand-held equipment for HAV levels).

We use the information from the report and speak to staff about their preference when purchasing new kit. However, Earlsmere make recommendations regarding replacement kit with low HAV’s.

Large items of equipment are leased for a period of four to five years (e.g. tractors, ride-on mowers). We have currently own five John Deer Gators.

## **5.7 Machinery servicing and repair**

The Landscape Grounds’ handheld kit is serviced annually. Working hours are monitored and uploaded through the Reactec Analytics system – this is used to support servicing of equipment. Local machinery dealership, PS Marsden, visit weekly to carry out service and repairs.

All large items of kit (tractors, ride-on mowers/gators, and trailers) are maintained by the current lease supplier, Tractor & Machinery – they attend weekly to maintain the large fleet.

Tractor lifting equipment (LOLER inspection) is checked and tested annually by Allianz. Machinery complies with The Provision and Use of Work Equipment Regulations 1998 (PUWER). Records are maintained by the Grounds Maintenance Managers.

When using equipment, staff complete a daily check sheet to record any faults and repairs that are needed. Team Leaders are informed and progress if repairs or service is required.

## **5.8 Landscape & Grounds training and development**

The university is committed to training and development of all staff. The Grounds section has identified certain training which is essential for their role also to undertake role safely. They attend this update every three to five years.

- Moving & Handling
- Health & Safety
- Fire Safety Training

- Risk Assessment Training
- First Aid
- Safe Use of Ladders
- Equality & Diversity
- Lantra Tractor Training

Further training for each member of staff is identified through their role but also through the annual Appraisal and Development Conversation (ADC). The development review is carried out between employee and their line manager.

We use different training methods when delivering staff training. In addition, established staff are given the opportunity to further their educational knowledge in amenity horticulture and sport turf, with a view to gaining a national diploma, HND, degree level course, or master's degree. This is supported by taken a year this is supported by the University.

## 5.9 Street furniture

Wherever possible, landscape elements used on campus are standardised to give a level of conformity. Standard paint is used for all signs, streetlighting railings and most other external surfaces.

Litter bins are in two types of Westminster style, from amber in dark green with the university logo and hooded tops. Bollards are black recycled plastic from DPR. Cycle stands are Sheffield style hoops in dark green or stainless steel, often set in block-paved surrounds.







*Marble seating in front of the Advanced Manufacturing Building, Derby Road*

External seating is an important provision to enable uniformity of design and materials on site. It has been agreed that three types of benches can be used – the Wollaton and Grosvenor range from Red Trees, and the stainless-steel, Model C range from Benchmark.



There are different styles of furniture outside Cafe Aspire and other retail outlets around Triumph Road. Other buildings such as Nottingham Geospatial Institute (NGI) have marble cube style seating.

This policy has enabled easier street furniture maintenance plans and better material choice for the great variety of historic and modern areas on campus. It is hoped the furniture will complement the built environment. On occasion, seating is donated and then bears an engraved plaque.

Cigarette ash stands are approved methods of collecting of cigarettes/cigars. Waste and are made out of the same material and design, although some litter bins also include an ash tray in the design, for example, model ash guard 4L produced by Glasdon UK.

## 5.10 Recycling units

The onsite/street external recycling facilities are managed by the Grounds section. The units are checked daily by the External Cleaning team and emptied.



## Section 6: Environmental Management



The university is committed to maximising the positive impact it has on the local and global environment whilst reducing the environmental impact of its activities. There are several policies and strategies relevant to environmental sustainability (listed below and found on the university's Sustainability webpages).

- Environmental Sustainability Strategic Delivery Plan
- Environmental Sustainability Policy
- Carbon Management Plan 2030
- Sustainable Food Policy
- Estates Development Framework
- Biodiversity Action Plans
- Preliminary Ecological Appraisal and Baseline Biodiversity Impact Assessment
- Travel plan

Our Environmental Sustainability Strategic Delivery Plan (ESSDP) sets out our priorities to deliver against the university's commitment to environmental sustainability and The Environmental Sustainability Policy sits alongside and compliments the ESSDP, setting the overarching principles regarding how we will protect and improve the environment, and embed sustainability. These principles include:

- Drive reductions of greenhouse gas emissions in line with our science-based carbon reduction target.
- Actively promote and facilitate the use of sustainable modes of transport.
- Reduce resource consumption through a circular economy approach and minimise waste.
- Prevent, limit, and control any pollution or emissions that could be harmful to human health, air, land, and water, because of university operations.



- Reduce water consumption whilst increasing the efficiency of our water systems.
- Make space for nature on our campuses to ensure that biodiversity can survive and thrive, whilst promoting carbon sequestration via our green spaces.
- Ensure that all new development and refurbishment projects utilise best practice environmental sustainability standards to drive a greener campus-built environment.

The policy helps ensure compliance with relevant environmental legislation and aligns with international principles of environmental management. The university operates Eco Campus, an Environmental Management System (EMS) specific to higher and further education. This is a structured framework to identify, manage and control an organisation's activities that impact on the environment. As of December 2023, the university has achieved silver status and is working towards Gold and then Platinum.

As part of the ESSDP, an accompanying Action Plan sets the objectives and targets for environmental improvement. It incorporates actions from across Estates & Facilities, including the Grounds team.

#### **Grounds and landscape actions include:**

1. We will work with partners across the region to develop Biodiversity Action Plans integrated into our landscape strategy and management plans for each of our campuses, including a phased investment plan.
2. We will provide opportunities for students and staff to participate in biodiversity studies.
3. Continue with and expand the reduced mowing regime.
4. Link with students to facilitate onsite biodiversity surveys.

The ESSDP and Action Plan are overseen by the university Environmental Sustainability Committee.

All new buildings benefit from a landscape design process, large build projects adopt the BREEAM Environmental Assessment and Award. The Grounds Section provide design services for the new buildings.

## **6.1 Energy and renewables**

In 2021, the university committed to a science-based approach to setting carbon reduction targets for its UK operations. We have established the following ambitious carbon reduction targets:

- **2030 – 63% reduction in emissions**
- **2040 – net zero carbon target (with offsetting)**
- **2050 – absolute zero carbon target (without offsetting)**

The [2030 Carbon Management Plan](#) sets out the pathway to achieve these targets. This includes the prioritising of refurbishing existing buildings above undertaking new builds as much as possible and deep refurbishment must include high levels of thermal insulation to all the main building elements. Any new build projects will be designed without natural gas supplies. Overall, low carbon principles are embedded into processes and policies.

A bank of heating exchange units was installed in the middle of the lakes on Jubilee campus in 2010. The unit's function to keep the buildings cool in summer using a minimum of energy in comparison to other methods of cooling a building. A good example of the landscape integrated with the built environment.

## 6.2 Transport

The university has a travel plan and actively encourages staff and students to choose low-carbon, healthy transport options when travelling to University Park. The university has worked to improve sustainable transport options for staff and students, resulting in:

- Investment in cycling infrastructure
- Free bike maintenance checks with Dr Bike
- A semester bike hire scheme for students and staff
- Staff able to hire/buy cycles through payroll and save hundreds of pounds
- Discounted bus travel available for staff and students
- As carshare scheme for staff
- Increased provision of the inter-campus buses

More information on these initiatives is available on the Sustainability webpages.

<https://www.nottingham.ac.uk/Sustainability/Index.aspx>

## 6.3 Waste minimisation

The university aims to minimise waste and its associated environmental impact. Only 10% of the waste that the university produces is sent to landfill. The university has co-mingled recycling bins, which are clearly labelled across our campuses, inside and outside. There are separate streams for construction, hazardous, glass, batteries, and other specialist waste. Food waste is collected by the appointed waste contractor and processed locally by an anaerobic digester. We utilise the WARPit platform to reuse and redistribute office furniture and equipment.

The municipal waste contract is part of an East Midlands waste consortium with other local universities. The internal bins are emptied twice weekly. The onsite/street external recycling facilities are supplied and managed by the Landscape & Grounds Team daily, including bank holidays.

## 6.4 Grounds waste

Horticultural waste is recycled to produce compost or mulching materials. We have a Zago 11SD GRU Eco Green Waste Shredder and a Greenmech Chip master. Generating volumes of up to 1,000 cubic metres of compost per year. The material produced is used as a soil ameliorant over all university sites, including the student community garden. Grounds staff aim to segregate softer material, including autumn leaves, for composting into a rich soil ameliorant. Woody material is processed separately into a coarser product used as a surface mulch. Christmas trees are also recycled.

## 6.5 Chemical use

The use of pesticides is kept to an absolute minimum. Herbicide use is limited to hard surfaces and derelict land, glyphosate is the preferred contact systemic pesticide for all purposes. This is applied on a performance or need basis rather than the less-favoured frequency-based preventative method adopted in the past.

Pesticides are not used on interior plants; these are replaced if problems develop because of the lack of suitable controls. Biological control can be considered in some situations. The glasshouse unit uses integrated pest control and has a low input of insecticides, relying on living predators to control a variety of pests. Biological control is supplied under contract by Syngenta who also provide a consultancy service to the university.

## 6.6 Peat use

No peat-based products are used for soil amelioration. Instead, university garden waste (composted on site) is used. For mulching borders, processed bark or wood chip produced on site is used in a comparable way, although insufficient amounts are produced to meet demand.

Where container plants are purchased from external suppliers, the university has a wide planting policy, and it is currently difficult to obtain plants from growers that do not use peat. From 2018 we have been using peat free alternative growing media for all externally supplied container grown plants, where available. This should reduce the number of peats being used on university sites. The percentage of peat free container plants should therefore increase under this strategy.

## 6.7 Climate Change Adaptation

The university is considering the risks and opportunities to our built and natural environment posed by the impacts of a changing climate, including floods, extreme temperatures, wildfires, increased storm intensity and drought.

The university commissioned a project to increase its understanding of physical climate risk to the built environment over the short, medium, and long term. The assessment considered the risk of extreme precipitation, wildfire, heat stress, drought, mass movement, and extreme cold, so that we have a full picture of the climate risks and opportunities across our whole campus estate. The map below is a visual summary of priority risk for built assets at Jubilee Campus.





The findings of this study will be used to inform a wider Adaptation and Resilience Strategy for the university, from future maintenance programmes, to how we build new buildings in the future, to how we landscape our campuses. Regarding the natural landscapes on our campuses, this should include considering measures such as:

- Exploring opportunities for de-paving and green infrastructure across our campuses to reduce surface water run-off and flood risk.
- Considering strategic planting and landscaping to reduce the risk of wildfires.
- Considering strategic planting to enhance shading for buildings and green spaces.
- Exploring drought resistant planting to cope with higher summer temperatures and any resulting water scarcity.
- Exploring options to capture and retain rainwater on the campuses, so that it can be used for irrigation of the playing fields during the drier periods.

Utilising nature-based solutions will enable us to delivery co benefits, for people, for plant and for place.

## 6.8 Biodiversity

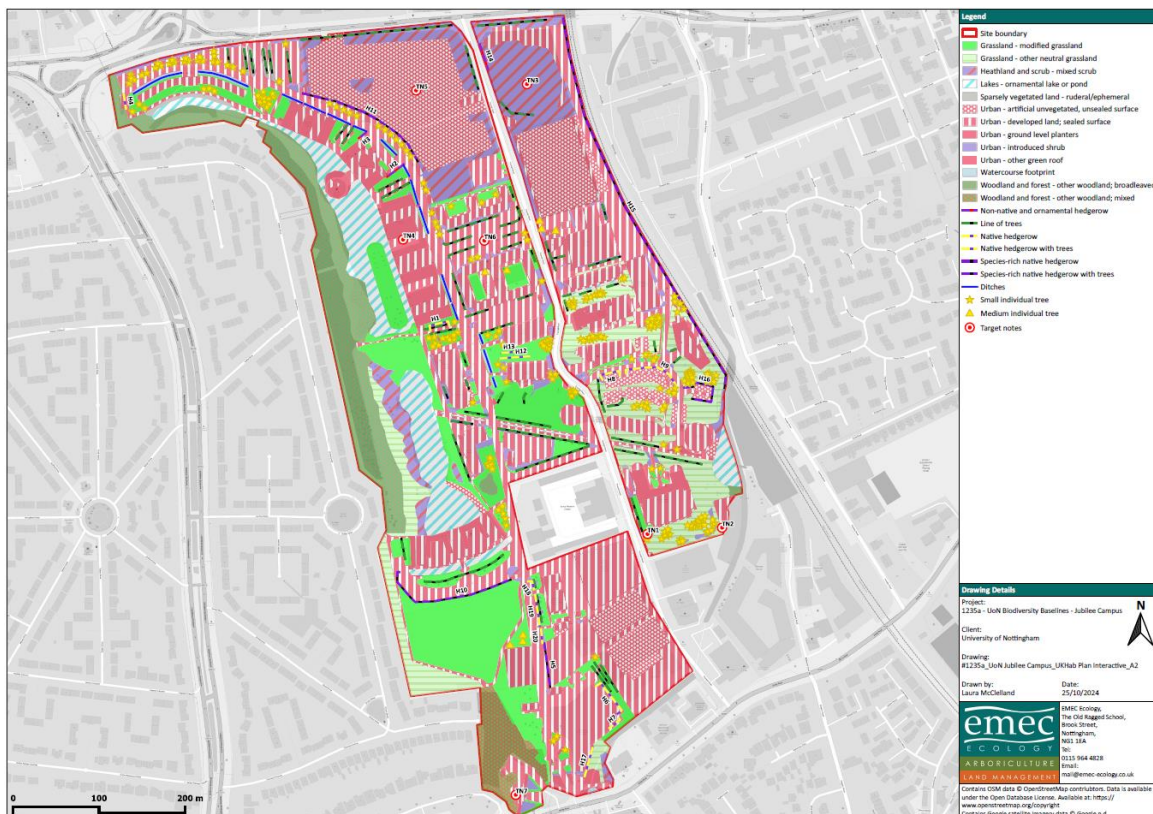
Our university campus grounds feature many diverse habitats and as such support a wide array of flora and fauna. They are a valued asset, and our green spaces are often cited as the reason students and staff choose to study and work here.

When the Jubilee Campus was developed, professional ecologists provided a biodiversity audit with recommendations that resulted in a broad range of habitats being created from what was a derelict industrial site. The landscape at Jubilee Campus is based around three lakes and was designed and is maintained with emphasis on wildlife conservation. The River Leen, a Local Wildlife Site, runs along the southeast boundary of the campus. Wollaton Park, a Local Nature Reserve, is 600m away.

Habitats include lakes, ditches and wetland, woodlands, hedgerows, scrub, meadows and grassland, as well as ornamental planting. A meadow area toward the Jubilee Conference Centre was established on the waste from the previous buildings and supports a wide range of flowering plants and feeding invertebrates.

There is a strong emphasis on native planting within all building developments, this is balanced in some instances with ornamental planting close to buildings.

Biodiversity audits were repeated in in 2023. Further details of specific habitats, their condition and species can be found in the PEA and BIA report for Jubilee Campus on the [Sustainability website](#). It also details recommendations for improving each distinct habitat type and for the benefit of the flora and fauna found within them. This information has been used to develop the campuses Biodiversity Action Plan. The habitat map for Jubilee Campus is shown below.





## 6.9 Management strategies

The management techniques employed across the estate consider impacts on flora and fauna and ensure that the potential for biodiversity is maximised. See sections 5, and 6 and as detailed below. See the Biodiversity Action Plan for Jubilee Campus for more information on managing the site for the benefit of wildlife.

The university actively takes part in the national initiative ‘No Mow May’ annually. This involves leaving grassed areas unmown throughout the month of May to encourage flowers and provide habitats for pollinators. The number of areas left in this way has steadily increased since 2021 and the introduction of a relaxed mowing schedule. The campaign is also used to engage staff and students with nature on campus. Meadow management involves a hay grass cut once or twice a year in spring and late summer. The material is removed and used for green waste on the university Farm.

With the existing areas of habitat, seral change is encouraged in areas of open water marsh copes, wood and scrub.





## 6.10 Tree surgery

Trees are encouraged to develop a natural form, and surgery takes place as a response to tree inspection, silvicultural needs, thinning of new plantings and safety risk. Where possible and safe to do so, dying trees are left as bat roosts or for wood boring birds and insects. In some woodland areas, pruned material and felled timber is left as habitat piles, although the risk of summer fires must be considered.

## 6.11 Water conservation

All new planting projects are mulched for water conservation. New trees are fitted with water tubes to direct water to the essential root zone. Tubs and hanging baskets used throughout the park in the summer months contain water-retaining granules to reduce the amount of watering needed. The amenity building on the west side of the Yang Fujia building is planted with a selection of drought resistant grass varieties, birch, Rhus and herb plants.

## 6.12 Nature positive universities

In 2022, the university became a founding signatory of the Nature Positive University Alliance. This initiative, co-led by the UN (United Nations) Environment Programme and the university of Oxford, is driving the world's higher education sector towards a nature-positive future. By pledging to become a Nature Positive University, Nottingham has committed to:

- **Reducing** negative impacts on nature
- **Restoring** species and habitats
- **Renewing** ecosystems

Work is underway to establish a baseline to enable us to develop meaningful targets that benefit and increase the nature on our campuses in line with this initiative.

## 6.13 Hedgehog Friendly Campus

The university has so far achieved a silver award in the Hedgehog Friendly Campus scheme. This initiative aims to raise awareness of the plight of hedgehog whilst taking practical steps to improve habitats and circumstances for hedgehogs across university campuses.

The university's Hedgehog Friendly Campus group was set up in 2019 with volunteer members from across staff and student areas. The group is actively working to enhance campus environments for the benefit of hedgehogs and has undertaken activities such as hedgehog surveys, litter picks and installed hedgehog road crossing signs. The group achieved the gold award in 2024.

## Section 7: Conservation and heritage

The Jubilee Campus site was essentially an industrial site almost completely covered with Raleigh and Stürmer Archer factory buildings from 1960s until the mid-1990s a comparison of the site then and now

With also Northeast of the site gasworks and gasometer this remained in place until 2010.

Northeast of the site up until 2023 three large concrete building which was bond warehouse for Imperial Tobacco (John Players)



### 7.1 Geology and soils

The industrial heritage of the site means there is little parent soil within the site, except narrow strips alongside the west and southern edge where a heavy clay loam is present. This is formed from Nottingham sandstone and glacial drift. The remainder of the site comprises of a mix subsoils and crushed rubble from buildings (this is neutral to acidic in nature). In all 2,600 cubic metres of material was returned to the site as a landscape media.

The poor-quality, low-nutrient substrate has helped the establishment of species rich neutral meadow areas, and it has been a highly successful example of recycling and sustainability.

### 7.3 Landscape planning

The initial phase of Jubilee Campus 1997-2000 had a structured landscape plan and a management plan produced by consultants Battle McCarthy. This has been followed by a Grounds' Maintenance Procedure and Landscape Management Plan.

## Section 8: Community involvement



### 8.1 Community access and involvement

The Jubilee Campus is completely open on almost all sides, there is unrestricted public access along the length of Triumph Road, other entrances include:

- Orston Road South end of the site, pedestrian and Cycle
- Wollaton Gate NE Corner of the site pedestrian, cycle and vehicle
- River Leen and a lake footbridge East boundary of the site for pedestrians and Cycles
- Middleton Boulevard access NW corner of the site, pedestrian and Cycles

The University of Nottingham is incredibly supportive and proud of the fact the wider local community are able have freedom to access all university campuses. Jubilee Campus is by design very accessible to the local community and is completely open on almost all sides, there are no barriers to visitors, and this is encouraged.

There is unrestricted public access via Triumph Road and the pedestrian and cycle bridge over the River Leen to Radmarsh Road has made the site much more accessible to visitors from the local community, both of which now also link private student accommodation to the site.

During the week many food outlets are available to the public, Cafe Aspire at the Xu Yafen Building, Spokes Cafe at the Jubilee Conference Centre and Cafe Terrazzo, which is based within the Exchange Building. Within the Exchange Building there is a Spar shop and Students' Union general store which are available for use by the local community. There is also a NatWest Bank ATM at the front entrance.





Refreshments are also available early until late from the Costa Coffee outlet on Triumph Road.



There is a picnic area (below) on the island of the middle of the three lakes adjacent to the Business School. This facility is very well used during the summer months.





## 8.2 Community groups

The Friends of University Park have been offering free community tours of the Jubilee Campus for several years and there has been a lot of interest locally.

In 2023 the university, along with the Friends Group offered a talk on the History of Jubilee Campus. The talk was led by the Head of the university's Capital Projects team and included information on the sustainable initiatives incorporated into the buildings and lake systems on Campus.

Jubilee Campus will continue to be included in the Friends Group's events schedule which is agreed and produced annually between the Friends Group and University Grounds Management Team, with support from Estates Events Management.

The latest version of the Friends of University Park Public Events Brochure can be found on the university's website via:

<https://www.nottingham.ac.uk/sustainability/grounds/friendsofuniversitypark.aspx>

The campus is really beginning to lose the construction site image and has become a more attractive green space for all to enjoy with new planting enhancements and tree planting schemes in 2023/24 and new bulb planted areas. These planting activities are often undertaken during volunteer sessions where staff and student groups can come along and get involved.





The East side of Triumph Road is referred to as an Innovation Park. Development commenced in 2007 – the site includes the Sir Colin Cambell Building, Energy Technology Building, Nottingham Geospatial Institute, the Aerospace Technology Building, the Institute of Mental Health, The Romax Building and the GlaxoSmithKline Carbon Neutral Laboratory Building, the latter of which was opened in 2017.

There are sustainable initiatives within the building designs and much of the landscape which will be discussed in Section 6: Environment and Sustainability.

A fifth lake and footbridge were created adjacent to the River Leam, improving further wildlife and accessibility to the campus. All design aspects of Jubilee Campus have high environmental standards within both buildings and the landscape.

The landscape design based on habitats comprising of lakes, wetlands, meadows and woodlands, with some areas of high horticultural excellence.



There is a strong emphasis on sustainability in the built environment and landscape which will be noted later in this report, the concept of the development, regeneration of a brownfield industrial site with a strong emphasis on sustainability, energy conservation, habitat creation, biodiversity and community access. There are also many open days for prospective students and relatives overall attracting 40-60,000 visitors each year.

### **8.3 Marketing**

Jubilee Campus is currently marketed on the university's website:

<http://www.nottingham.ac.uk/about/campuses/Jubileecampus.aspx>

The website contains an abundance of information's for the visitor this includes:

- Directions
- Awards
- Link to restaurants
- Academic buildings
- Sustainability
- Awards
- Images

<http://www.nottingham.ac.uk/hospitality/cafesandrestuarnts/cafesandrestaurants.aspx>

The Environmental & Sustainability team have very good relations with Landscape & Grounds staff, students and the public. The Communications team and work closely to ensure key opportunities for involvement are shared across all forms. They advertise events through University Website, Facebook, WhatsApp where it currently 1200 Instagram follows this amount is increasing year on year images are also shared of projects and works activities. Biodiversity Share monthly Updates there are newsletters each month carrying stories about reducing the university carbon footprint and campus related biodiversity events.

The activities organised by Friends of University Park are currently through email:

[FOUP-Events@nottingham.ac.uk](mailto:FOUP-Events@nottingham.ac.uk)

[www.nottingham.ac.uk/go/friends](http://www.nottingham.ac.uk/go/friends)

Local media is also used for advertising activities and events

- Nottingham Live
- BBC Radio Nottingham
- Nottingham tourist information
- NG2 Magazine
- Green Flag

## **Section 9: Jubilee Campus – Grounds action plan 2025-32**

### **How will we get there?**

This action plan has been developed to cover 2021 Green Flag judges' comments, pending the updated version of the Jubilee Campus Grounds action plan 2025-32.

The action plan will be monitored quarterly, and progress reviewed and reported annually.

An updated action plan for Jubilee Campus is generated during December when the plan is reviewed as part of the university's submission process for the Green Flag Award.

**Key:**

GS Gregory Smith, Grounds Manager  
 DC Dale Coates, Jubilee Grounds Manager  
 AM Connie Parr, University Park Grounds Maintenance Manager  
 PB Peter Bullimore, Grounds Maintenance Manager Sport, Sutton Bonington  
 AM Alex Martindale, Jubilee Supervisor  
 GJS Gavin Scott, Environmental Officer  
 AC Alison Clayton, Environment Assistant

Objective	Action	Year	Lead officer	Budget/resource	Update – Summer 2025
<b>Welcome</b>	Review vegetation. Maintenance improvements to the Wollaton Road/ Triumph Road entrance into the campus, including new road crossing.	2025	GS/DC	Working local authority. No current cost.	Triumph Road entrance crossing – Summer 2025.
	Sport Pitch fence line, shrub border improvement, removal of vegetation to fence line, cutting back of shrubs.	On-going maintenance	DC/AM	In house	Jubilee team – ongoing maintenance.
	Review of all signs and logos.	2020-25	Estates Projects team	£12,000	
<b>Health, safety and security</b>	Inspect lifebuoy stations.	Weekly	DC		Currently looking at replacements. DC to monitor.
	Introduce tree risk management procedure across all sites: including zoning of Jubilee Campus	On-going since 2024 to present	GS/DC	£3,000	On-going.



Objective	Action	Year	Lead officer	Budget/resource	Update – Summer 2025
	<p>To implement the annual tree risk management inspection using Level 4 tree surveyor:</p> <ul style="list-style-type: none"> <li>▪ Red zones – annually/18 months</li> <li>▪ Amber zones – three yearly</li> <li>▪ Green zones – five/six yearly</li> </ul> <p>In-house staff to undertake annual inspection of zones outside of their Level 4 inspections.</p>	Annually June/July	GS	As above	<p>Survey completed for 2023. All identified trees works where Completed by tree team or outside contractor.</p> <p>Due to start in spring 2025 new survey and tree numbering.</p> <p>Team Jubilee operations Manager to access on monthly walk round when they do their separate walk inspections.</p>
	<p>Review and implement grounds maintenance, operational H&amp;S arrangements (e.g. risk and COSHH assessments).</p> <p>Trees/haulage: GS Sport: PB Landscapes: DC Nursery: CP</p>	Complete annually throughout 2024	GS/DC/CP/PD		On-going, every 18 months.
	Hard landscaping areas which need repair are planned in with ongoing job tickets.	On-going routine maintenance			Progress through Planon (E&F facilities management system).
	Tree assets are being updated to go onto new soft system to support ongoing maintenance.	2025	GS/DC/CP/PB	£10,000	On-going until completed – Winter 2026.

Objective	Action	Year	Lead officer	Budget/resource	Update – Summer 2025
	<p>HAVS – implementation of new handheld vibration management system and monitor teams daily, create reports weekly.</p> <p>Runs alongside of tag system for each pieces of hand-held kit.</p>	On-going	GS / DC / CP/PB	£5,000 annually	Carried out each December. Reactec watch system is managed daily/weekly by Operations team and Team Leaders.
	Reduce dense vegetation along key cycle paths, pedestrian routes, and car parks.	Inspect monthly as part of quality monitoring.	GS/DC/PC/PB		On-going.
<b>Well maintained and clean</b>	Review road sweeping and litter collection – consider opportunities to utilise existing resources, especially through non-peak times.	January 2025	GS/DC		Schedule weekly visit of grounds road sweeper. Present at weekend and public holidays with staff on site for bin emptying litter removal.
	Introduce winter pruning programme.	2025	DC AM	In-house	On-going
	New planting of trees/shrubs at GSK building, footpath to student residences.	2025	AM	In-house £1,000	On-going – more trees to be planted winter 2025.
	Water features – inspect/maintain three times per week from April to September. Winter one/two times per week depending on climatic conditions as per written procedures.	Annual programme in place	DC	£2,000	On-going programme in place on going in houses.

Objective	Action	Year	Lead officer	Budget/resource	Update – Summer 2025
	Water features – quarterly servicing of features by external specialist contractor (Tills).	On-going	DC	£15,000	On-going
	Water feature – WCS assess for legionella management	2025	CH/DC		On-going
	Recycling green waste – minimise the amount going to land fill. Current performance 99%.	On-going	GS/DC		On-going. Waste is to move over to Sutton Bonington Farm and used as soil conditioner.
	Quality site monitoring – these are graded to quality targets and action as necessary. This is to include reporting any defects/vandalism of external furniture and features and any necessary street maintenance.	Weekly/monthly	DC/AM	As required	On-going – through weekly checks and inspections by Landscape team. Reports to Helpdesk by public and employees.
	Loose and missing stones around some water features have been identified for repair/replacement. On-going needs re doing for slips and trips.	March 2025		£10,000	University surveys to progress with contractors.
	Update Jubilee Campus Management Plan 2025-32.	January 2025	GS/DC/CP/PB	£400	To commence February by Grounds Landscape Management team.
<b>Environmental management</b>	University-wide waste reduction targets.	2024	GS/CP		



Objective	Action	Year	Lead officer	Budget/resource	Update – Summer 2025
	Environmental Management System.	2023/2024	GS		Working towards the Eco Campus Gold standard.
	Natural environment actions within the Adaptation & Resilience Strategy.	2024/25			The Adaptation & Resilience Strategy is currently being drafted, and actions are to be agreed.
	Exploring opportunities for de-paving and green infrastructure across our campuses to reduce surface water run-off and flood risk.				Blue/green infrastructure is currently being explored on the Downs to mitigate flooding as a result of surface water runoff during extreme rainfall events.
	Considering strategic planting and landscaping to reduce the risk of wildfires.				The Adaptation & Resilience Strategy is currently being drafted, and actions are to be agreed.
	Considering strategic planting to enhance shading for buildings and green spaces.				The Adaptation & Resilience Strategy is currently being drafted, and actions are to be agreed.
	Exploring drought resistant planting to cope with higher summer temperatures and any resulting water scarcity.				The Adaptation & Resilience Strategy is currently being drafted, and actions are to be agreed.
	Exploring options to capture and retain rainwater on our campuses, so that it can be used for irrigation of the playing fields during the drier periods.				The Adaptation & Resilience Strategy is currently being drafted, and actions are to be agreed.

Objective	Action	Year	Lead officer	Budget/resource	Update – Summer 2025
	Undertake seasonal bedding reduce peat trial.	From February 2017	GS/DC		On-going – leading to Landscape and Grounds being more sustainable.
<b>Biodiversity, landscape and heritage</b>	Develop and implement the actions from the Biodiversity Strategy & Action Plan.	2024-30	GS/DC/CP/PB/ GS/AC/SO'B		On-going.
	Develop and achieve biodiversity and nature positive targets as part of Nature Positive Universities commitment.	2024-30	GS/DC/CP/ PB/AC		On-going
	Develop conservation projects for students and local FoUP.	Review termly	DC/Conservation Society	£500	On-going.
	Improve habitat condition ratings and increase habitat units based on PEA and BIA reports.	2024-30	GS/DC/CP/ PB/AC		Actions to be incorporated into Biodiversity Action Plan.
	Continue introducing and improving wildlife habitats such as bird boxes and log piles as well as shelters for a wide range of invertebrates and insects.	2024-30	AC/GS/DC/ EMEC	£2,000	Remaining existing stock of bat, bird and insect homes and wildlife cameras to be installed in 2025, with help from external ecologists.
	Meet all biodiversity legislation including Biodiversity Net Gain requirements.	Review annually	AC/GS/GS		Approach to be agreed as part of Biodiversity strategy.
	Planting of new shrub borders, new wildflower grass areas, new turfed	Autumn 2021	LR/DC/CP/AM	£5,000	Complete – BREEAM. Assessment criteria met – with additional trees to be planted.

Objective	Action	Year	Lead officer	Budget/resource	Update – Summer 2025
	lawns and replacement trees for PEMC building landscape project.				
	Reduce mowing – mowing plans developed for staff to follow with extension of wild grass areas.	2021-22	GS/LR/DC	In-house	On-going with potential extensions for 2022.
	Wildflower areas identified and planned with Team Leaders, set out. Work on reducing the PH levels to create seed bed for wildflower seed.	2021-22	GS/LR/DC/AM	£250 for seed. All planning and preparation done in-house.	On-going with potential extensions for 2022.
	Develop a programme of bulb planting to prolong the seasonal flowering interest.	From Autumn 2022	DC/GS/AM	£500	On-going areas to be identified by Team Leader
<b>Community involvement</b>	Continue ongoing support and advice with Friends of Jubilee Campus and Scout Group also based at Jubilee Campus.	January 2025 onwards	GS/DC/CP/PB		Group established and meetings ongoing.
	Tennis courts renovations in 2020 and ongoing annual renovations has led to more community use of the tennis courts at Jubilee Campus, with walk up participations by students and general public.	September 2020	GS/DC	Annual renovations £1,000	Landscape & Grounds are look to extend the sport offering on the adjacent grass area to accommodate small size football goals for student participation. To reduced pressure in other community areas.





Objective	Action	Year	Lead officer	Budget/resource	Update – Summer 2025
	Develop an events programme that promotes access to the local community.	Annually	GS/DC/CP/PB/FO/JC	£1,000	On-going – Progress limited due to COVID issues we find ourselves in currently.
	New interpretation boards to potentially contain QR codes for improved community interaction.	2022	GS/DC/CP/PB/ GS/AC/SO'B	£10,000	Schedule meetings with wider university Estates Team and Sustainability team.
<b>Marketing and communication</b>	Annual review of Grounds/ FoJC website by internal communications team.	2022	GS/SO'B	TBC	On-going
	Promote Friends working group events programme, on website, on site in paper format and explore using social media.	2022	GS/SO'B	TBC	Delayed due to COVID restrictions.
	Develop new marketing/social media volunteer role for FoUP.	2022	GS/FOJC	TBC	On-going

