

Fire Procedure in IMH – University park

Fire Alarm

Is a continuous siren

Tested on **Monday** mornings

Raising the Alarm



Smoke & Heat detectors automatically trigger the fire alarm.

If you locate a fire or smell smoke you must raise the alarm by breaking the glass of the nearest fire alarm call point

Break Glass



Passing on Information

If the alarm is triggered in error (toaster, microwave etc.) you must call security to alert them, giving specific details of what has triggered the alarm.

There is a panel in the IMH reception that identifies exactly where the alarm has been triggered, this is used to inform the emergency services of the location of the fire.

Dial 8888

Mobile 01159518888



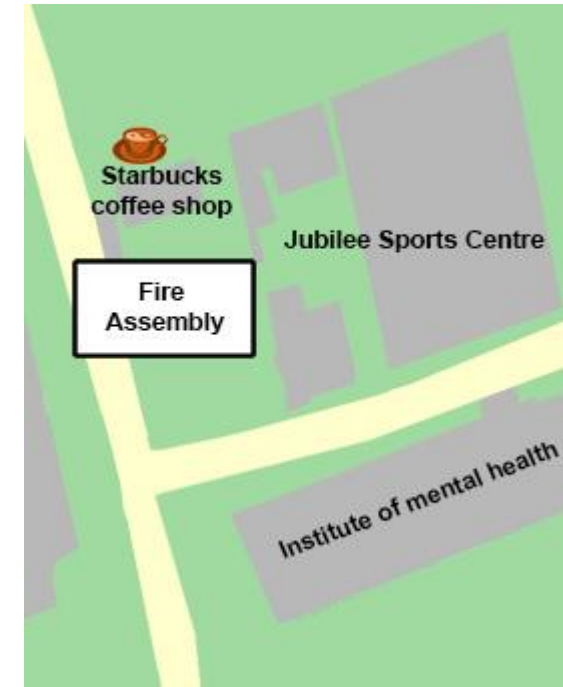
Evacuation Procedure

Evacuate the building by the nearest exit, closing all doors behind you.

Do NOT use the lifts or stop to collect personal belongings.

Proceed to the assembly point located outside the Jubilee Sports Centre / Starbucks in the pedestrian area.

The designated Fire Officer or Emergency Services Coordinator will instruct you when it is safe to Re-entre the building.

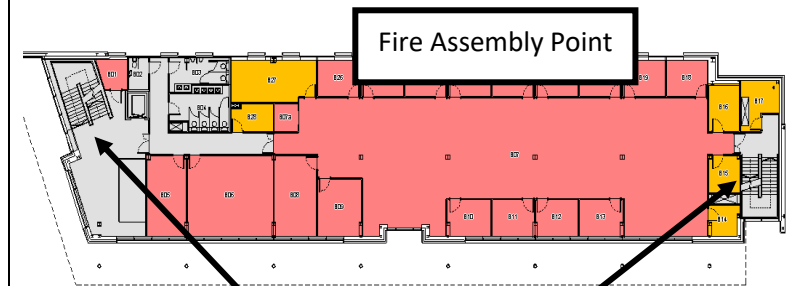


Refuge Areas

For individuals requiring assistance



You should use the phone to contact the university security and request assistance, you will need to tell them which refuge point you are at.



Fire Exits & Refuge Areas

Fire Fighting

If in doubt get out!

Only tackle the fire if it is safe to do so, and you have been trained

