




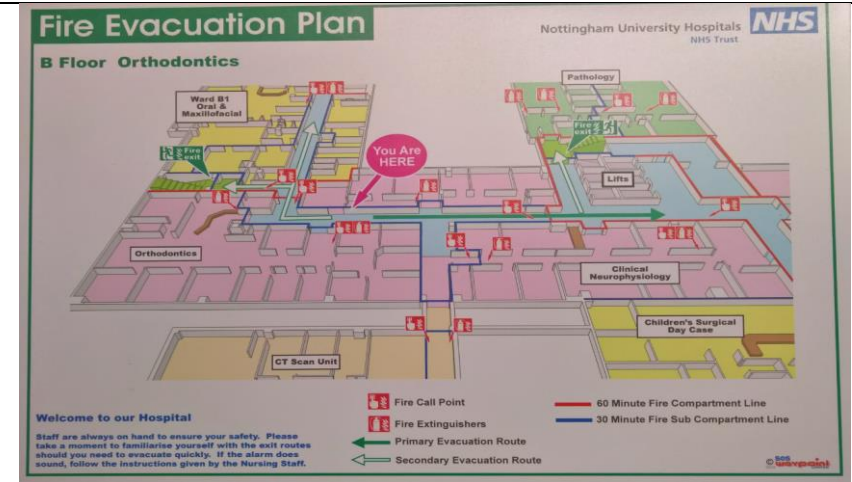
Fire Procedure for the Queens Medical Centre

| | | |
|--------------------------------------|---|---|
| <p>Fire Alarm</p> | <p>Intermittent Single tone Continuous Two Tone</p> | <p>Is tested on Thursday mornings</p> |
| <p>Raising the Alarm</p> | <p>The System is automatic with a detector in each room</p> <p>If you locate a fire or smell smoke and the alarm is not sounding you must raise the alarm by breaking the glass of the nearest fire alarm call point</p> | <p style="text-align: center;">Break Glass</p>  |
| <p>Passing on Information</p> | <p>Exact details of the fire MUST be reported to the QMC Switchboard, giving details of the location and nature of the fire.</p> <p>This is very important if a false alarm has been triggered</p> | <p style="text-align: center;">Dial 2222</p>  |
| <p>Hearing the Alarm</p> | <p>The fire alarm is a two-stage system that will give a two warning systems and a precise location on the fire panel.</p> <p>The QMC fire team and individuals from each area will check the fire panels located in each zone.</p> <p>Intermittent – Single Tone – Stay where you are</p> <p>Continuous – Two Tone – Alarm triggered in your zone, await instruction from fire warden or if fire detected follow evacuation procedure.</p> |  <p style="text-align: center;">or</p> |

Evacuation Procedure



If the fire is found or you are instructed to leave by the fire team, you should move horizontally to the next fire zone, into a different block in QMC, or into the Medical School.



Fire Fighting

Only tackle the fire if it is safe to do so, and you have been trained

