

Thinking data in aerospace manufacturing – present & future at CW Fletcher

Rufino Bolado-Gomez

22th January 2019



**Advanced Manufacturing
Research Centre**





- SME – Aerospace & Nuclear manufacturing
- Workforce of ~ 190 people with a turnover of ~£24 million

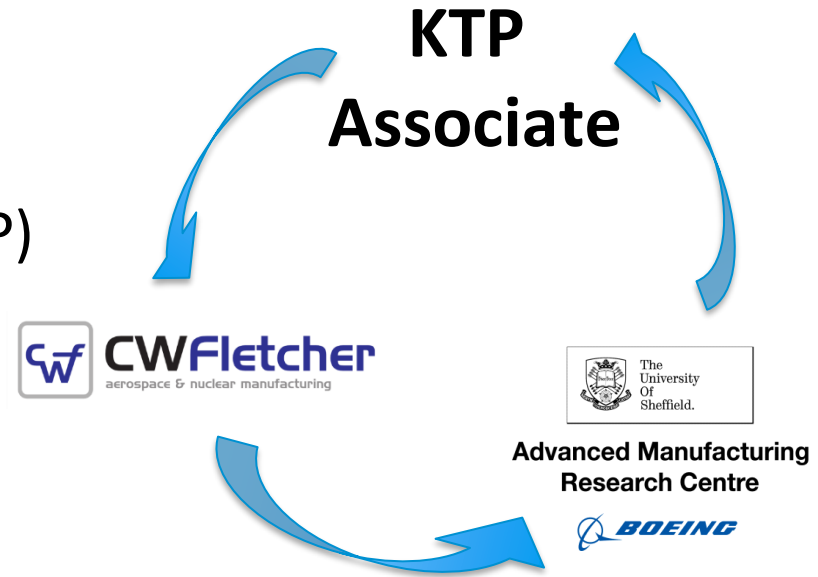


- Capabilities: CNC machine tools, welding, heat treatment, press work
- Customers: Kawasaki Heavy Industries, Rolls-Royce, GKN Aerospace, Meggitt



Journey @ CWF

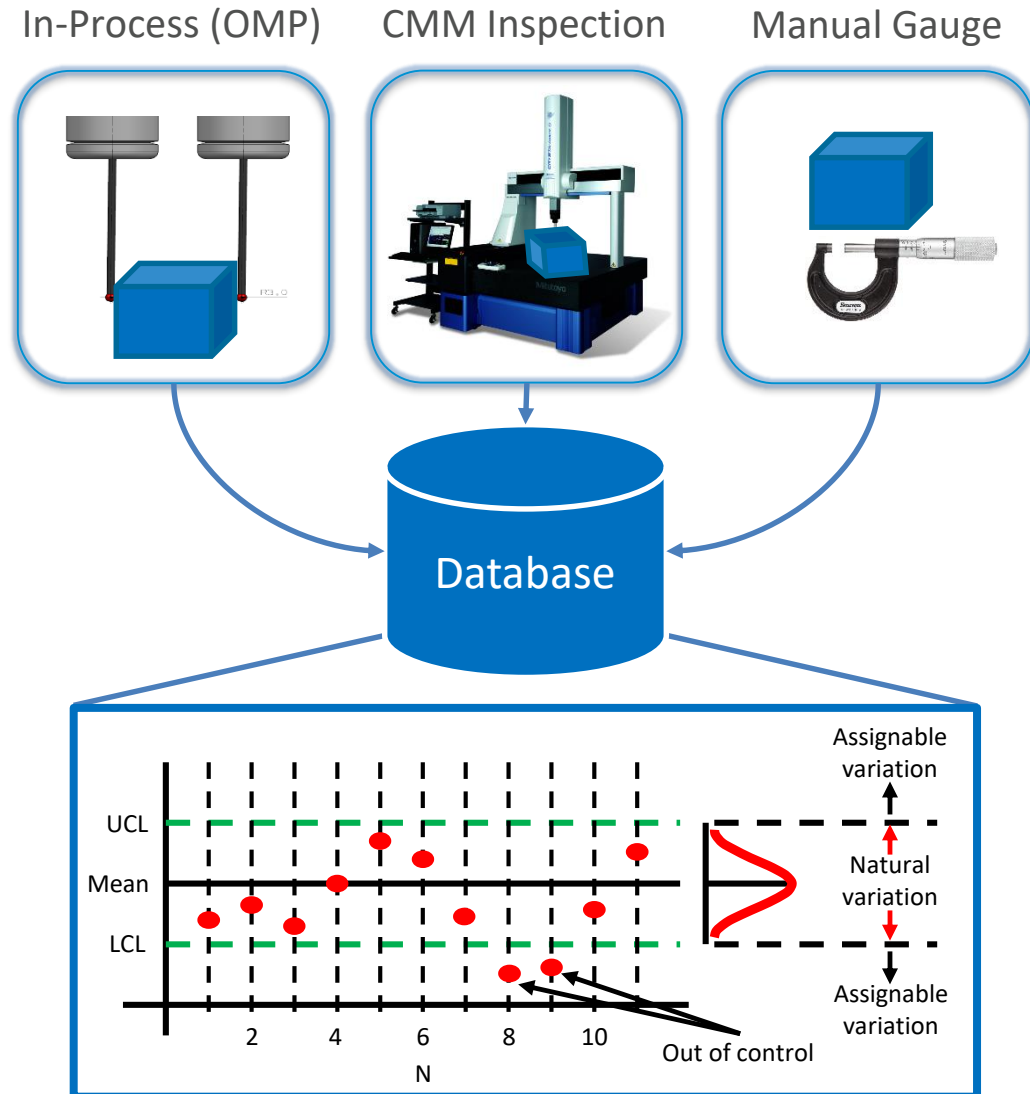
- Knowledge Transfer Partnership (KTP) in Process Monitoring & Control (Jun 2016 – Jun 2018)



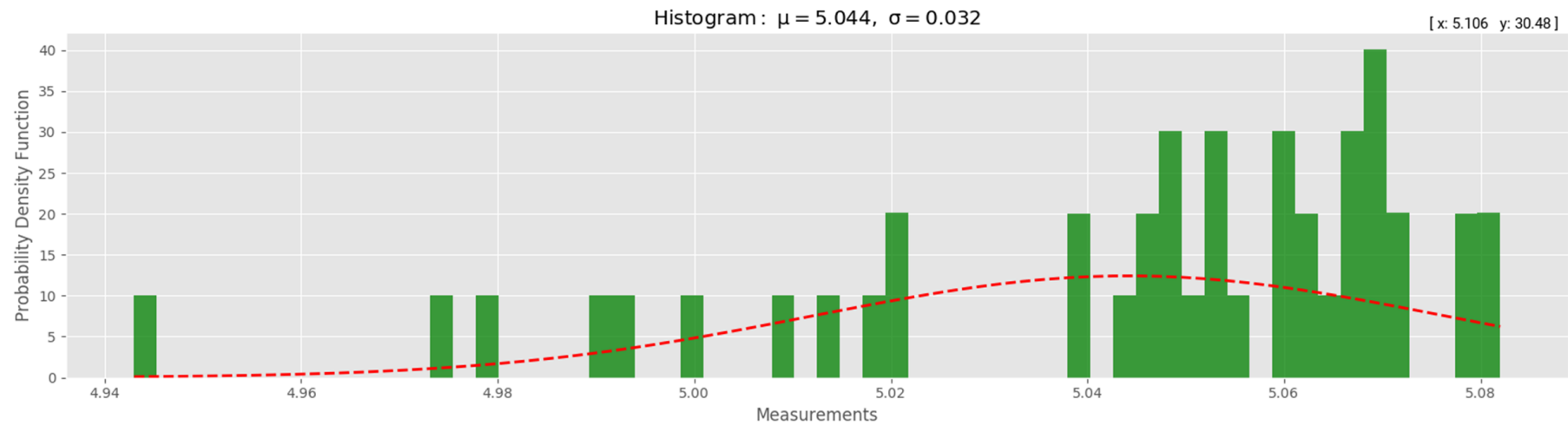
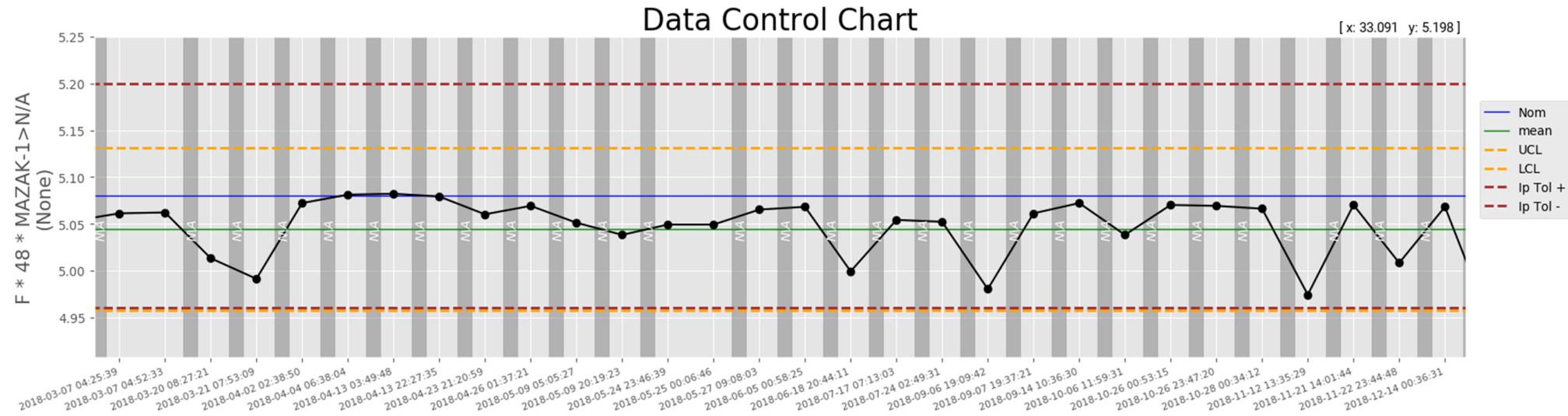
- Technology Applications & Strategy – new job role (Jul 2018 – present)



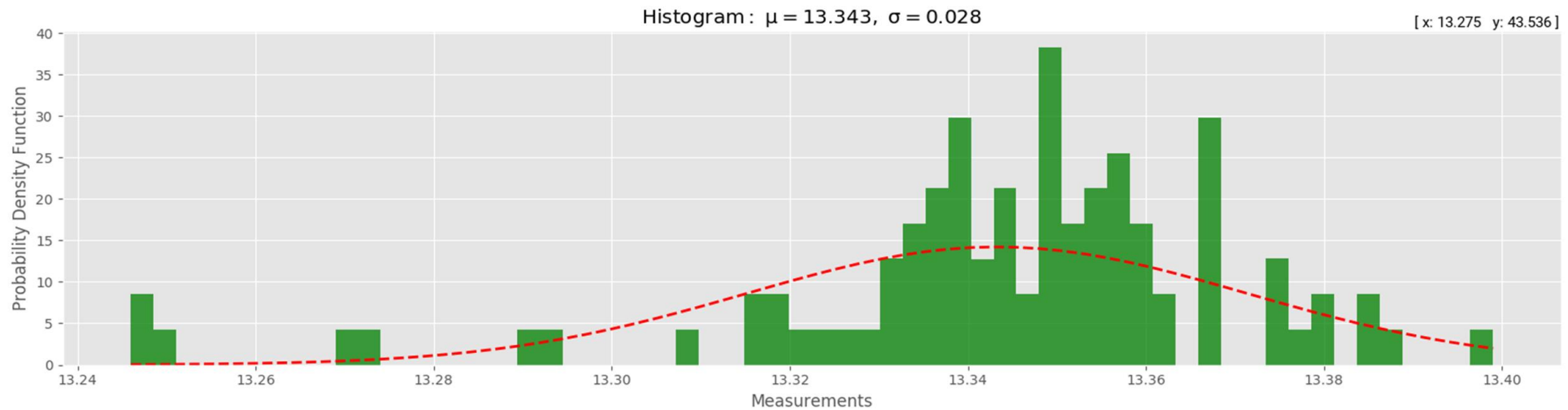
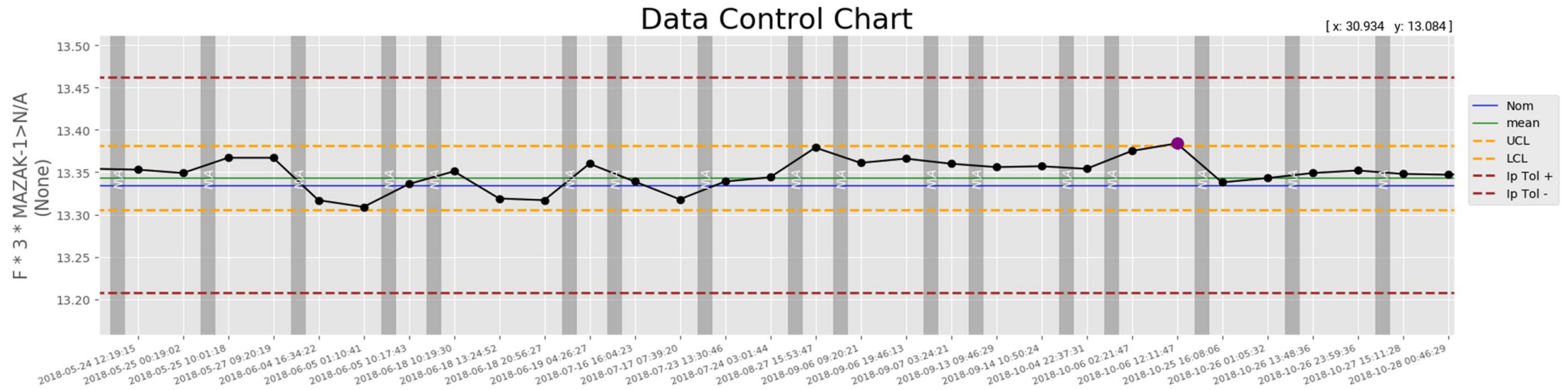
KTP Project



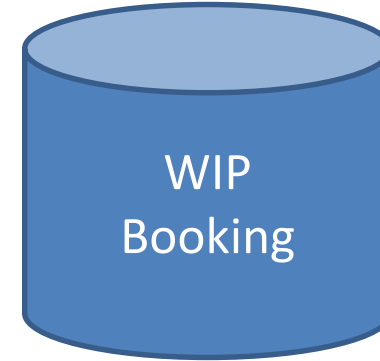
Data Visualization & Analysis



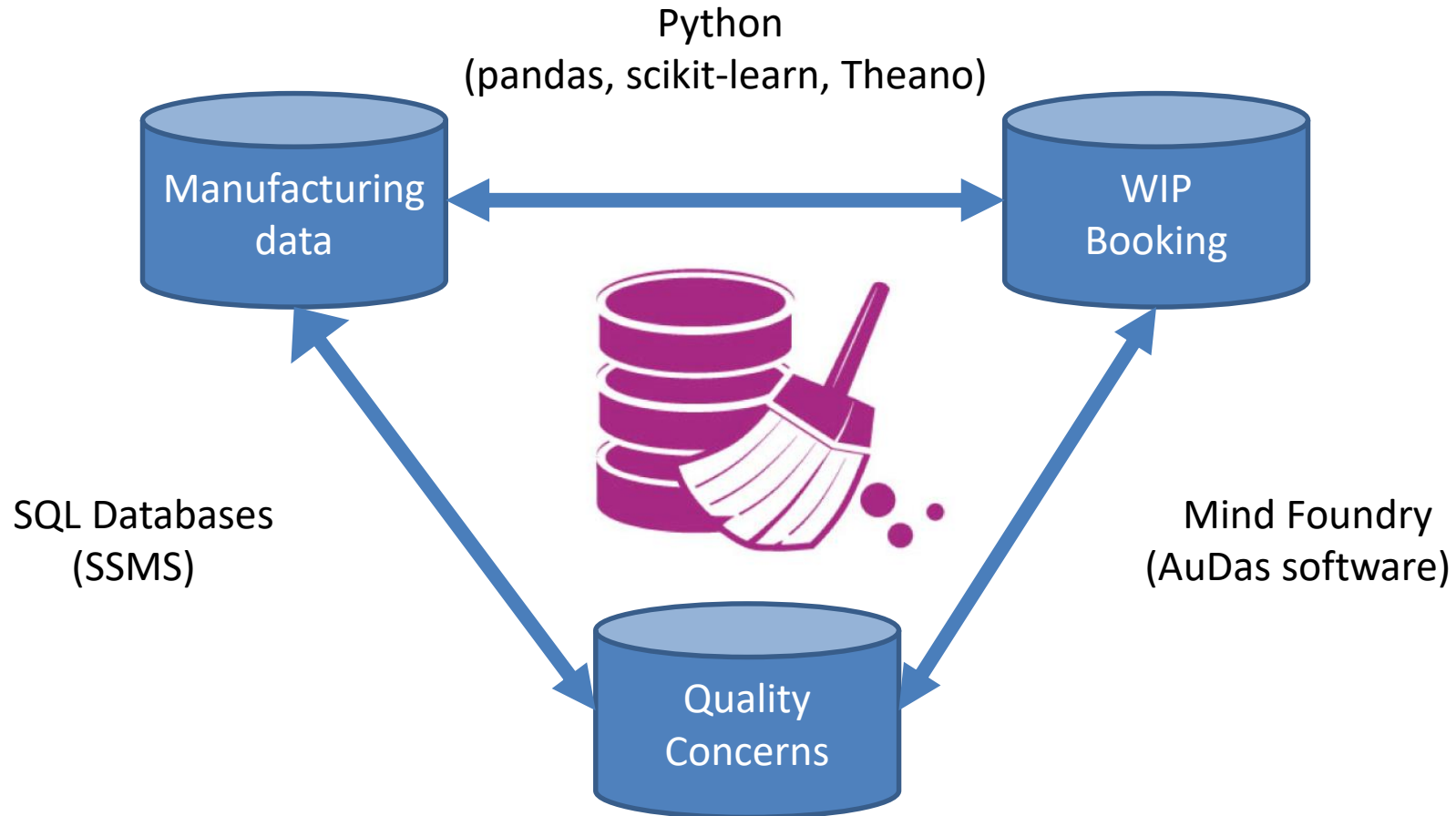
Data Visualization & Analysis



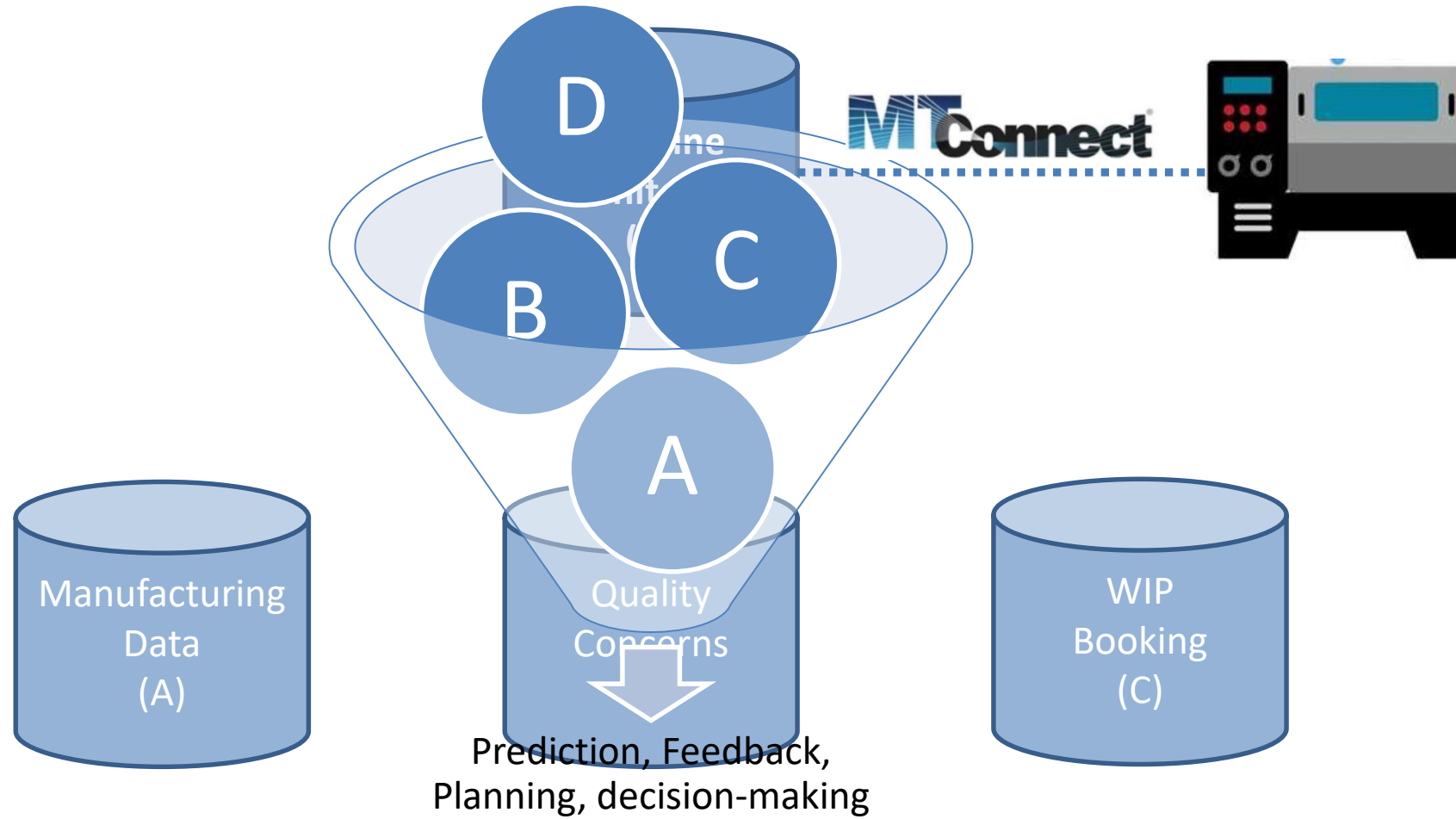
Future Data Insights



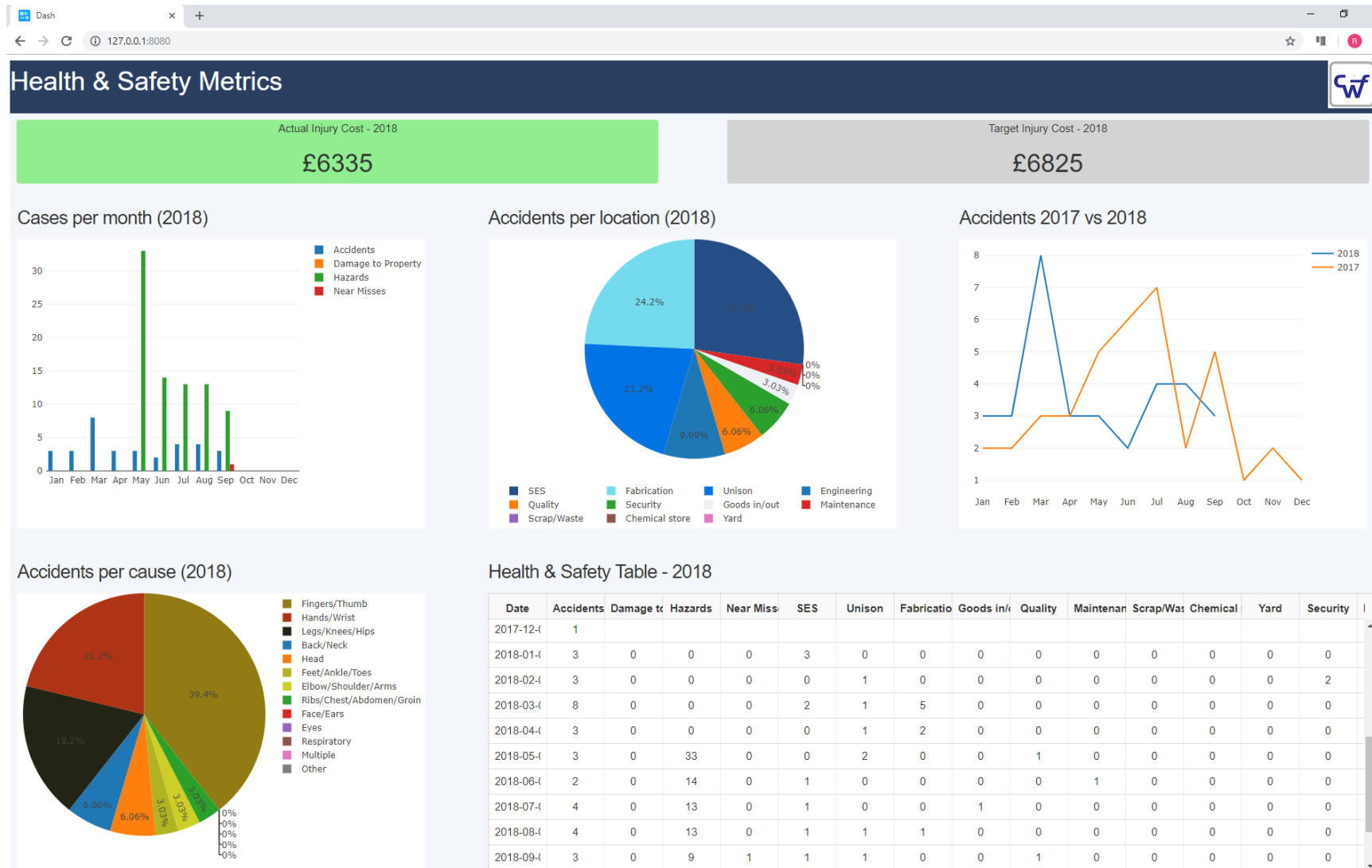
Future Data Insights



Future Data Insights



Future Data Visualization





Thank you.

Email: rbolado@cwletcher.co.uk

Web: cwletcher.co.uk

Rufino Bolado-Gomez

22th January 2019



Future Data Insights

