



# JBI-Accredited Systematic Review Training Programme

Learn how to undertake a systematic review using a range of approaches, in a Joanna Briggs Centre of Excellence

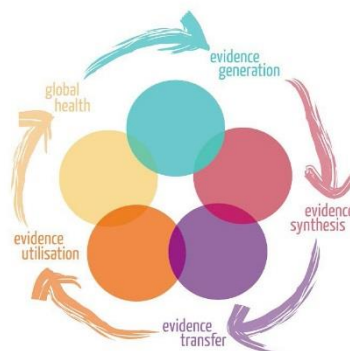
[www.nottingham.ac.uk/go/sysrev](http://www.nottingham.ac.uk/go/sysrev)



JBI-accredited

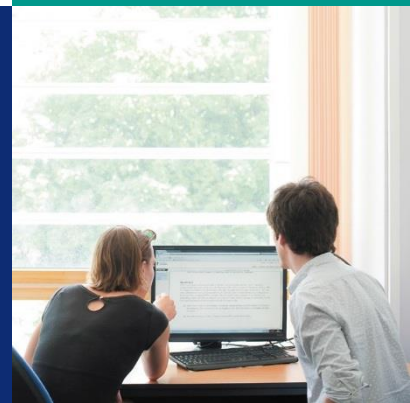


Local, national and international context



Delivered by expert trainers

Interactive learning





# Systematic Review Training: 3-module course–July 2021

Run over Several days between 1<sup>st</sup> July to 13 July 2021

## Overview

Established in 2003, The Centre for Evidence Based Healthcare is a vibrant and growing centre which focuses on evidence synthesis. Our expert staff come from a variety of disciplinary backgrounds and have vast experience with undertaking JBI as well as Cochrane reviews using a variety of methodologies.

Our course attracts national and international participants and is delivered by experienced members of the centre, who are JBI-accredited trainers. During the course you will gain a comprehensive understanding of all aspects of systematic review. Completion of the course also allows you to undertake JBI's 'Training of Trainers' Programme.

## Content

You will develop the knowledge and skills required to undertake a rigorous systematic review on a topic relevant to your practice, using an appropriate methodology. Learning outcomes include:

- Understanding the role of systematic reviews in improving healthcare practice
- Understanding the different approaches to systematic review based on qualitative and/or quantitative evidence
- Identifying a relevant research question and developing a protocol for a systematic review
- Gaining skills in JBI software to facilitate the systematic review process

## Structure

The course will be delivered online. Each day there will be a mixture of 'live' lectures, seminars and practical work facilitated through MS Teams. These will be supplemented by e-learning activities and exercises that can be worked through independently. The timetable will be structured to ensure an engaging mix of 'live' and independent activities to avoid 'screen fatigue' and to ensure a supported and enjoyable learning experience.

Upon completion of the course you will receive a certificate from JBI and copies of all resources used during the training. After the course you will also be offered continued mentorship if you wish to pursue a systematic review through the JBI collaboration.

University of Nottingham has made every effort to ensure that the information in this leaflet was accurate when published. Please note, however, that the nature of the content means that it is subject to change from time to time, and you should therefore consider the information to be guiding rather than definitive. © University of Nottingham 2020. All rights reserved. Printed November 2020.

## Modules

The course is divided into 3 modules; an introductory module (module 1), followed by modules specialising in the synthesis of quantitative and qualitative evidence (modules 2 and 3 respectively). All participants must undertake module 1, but can then choose to undertake both or just one of the subsequent modules. Hence, the course can be taken for a total of 4 or 6 days.

- Module 1 (introduction to systematic reviews): 1<sup>st</sup>-2<sup>nd</sup> July
- Module 2 (synthesis of quantitative evidence): 5<sup>th</sup>-6<sup>th</sup> July
- Module 3 (synthesis of qualitative evidence): 12<sup>th</sup>-13<sup>th</sup> July

If three or more members from the same institution complete all modules on the course, centre staff can support their institution to apply to become a JBI-Affiliate Centre.

## Course fees

### External Applicants

- 3 modules/6 days (external participants): £950
- 2 modules/4 days (external participants): £570

### Internal Applicants (University of Nottingham staff/students)

- 3 modules/6 days (internal staff/students): £500
- 2 modules/4 days (internal staff/students): £300

## Course dates

The full programme runs over six days, between 1<sup>st</sup> and 13<sup>th</sup> July 2021. To book your place please visit: [JBI-Accredited Systematic Review Training Programme](#).

## Cancellation policy

In the event of withdrawing your application, the following administration charges will apply:

- Withdrawal 1 month prior to the course start date – 75% of fees refunded
- Withdrawal 2-4 weeks prior to the course start date – 50% of fees refunded
- Withdrawal 1-2 week prior to the course start date – 0% of fees refunded
- Any amendments to the participant details and/or start date – £30 administration charge

“ We are Europe's first Joanna Briggs Institute (JBI) Centre of Excellence for Evidence Based Healthcare. Established in 2003 we aim to promote the science and practice of Evidence Based Healthcare. ”

Register by 1<sup>st</sup> June 2021

+44 (0)115 823 0894  
shs-cebhc@nottingham.ac.uk  
[nottingham.ac.uk/go/sysrev](https://nottingham.ac.uk/go/sysrev)