

## PARKING AND DIRECTIONS

### SUE RYDER CARE CENTRE – PRACTITIONER RESEARCHER NETWORK SEMINARS

#### Transport and Parking

It is difficult to park on site. Visitor's car parks at the University campus opposite are a possibility but are a good 15 minutes walk away. Buses run direct from Nottingham town centre to Queens Medical Centre (see [www.nctx.co.uk](http://www.nctx.co.uk)).

If driving, much the best option is to use the Park and Ride at Queen's Drive. This is South of the QMC, signed from Nottingham's Ring Road. Shuttle bus service is free from the car park. It runs every ten minutes. Alight at the Medical School Main Entrance or QMC Main Entrance (see below). You need to allow 20 minutes between parking at the park and ride and getting to the seminar room, may take less depending on whether you arrive close to a shuttle bus departure time.



**You can enter the QMC via number of entrances. The 3 most close to our seminar rooms are encircled in red in the picture. Red line depicts shortest routes between entrances and seminar rooms.**

UNIVERSITY CAMPUS MAP

<http://www.nottingham.ac.uk/sharedresources/documents/mapuniversitypark.pdf>

NUH NHS

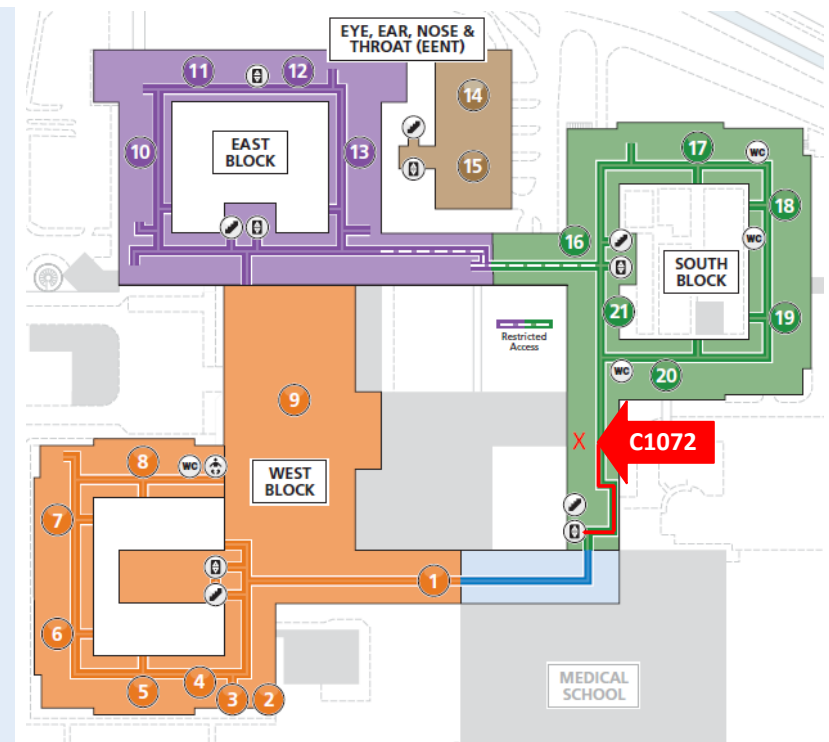
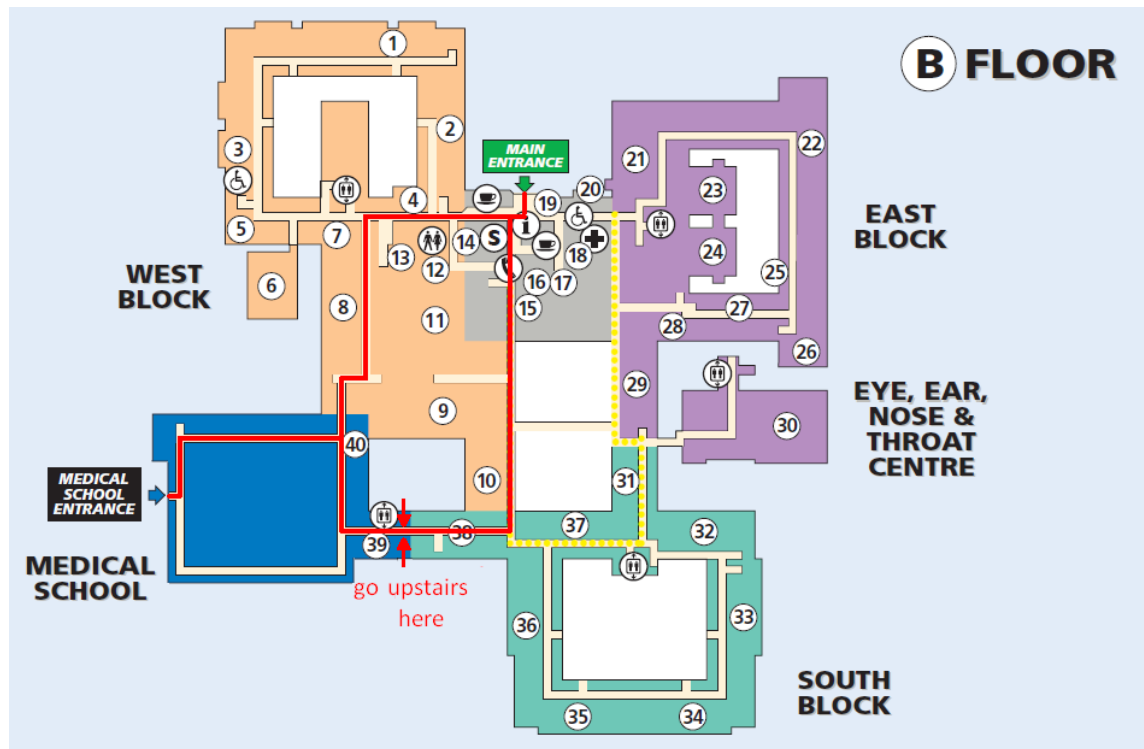
<https://www.nuh.nhs.uk/getting-here/>

## Walking directions to the **C1072** seminar room:

You can enter at any of the 3 specified above entrances.

### ENTERING AT **MAIN ENTRANCE** OF QUEENS MEDICAL CENTRE

- C1072 classroom in School of Health Sciences is about 5 minutes walk.
- Turn right on entrance, and keep walking. Pass Coffee City on your right. Pass Ultrasonography on your left.
- Turn left when Medical School is signalled on an overhead sign. (If you see clinical neurophysiology on your left you have gone too far).
- Follow yellow dots on floor which mark route to Medical School
- When you reach a blue carpeted section of the route, keep straight ahead.
- Turn left, mid way down the corridor before the Coffee Bar where you see an overhead sign directing to School of Health Sciences Reception.
- On your left you will see lifts and next to them stairs- please go to C floor (one floor up)
- On leaving the lift or staircase turn left and follow the corridor around C1052 lecture theatre, you will find C1072 on your left as marked on C floor map



**ENTERING AT MEDICAL SCHOOL ENTRANCE (A floor)**

- C1072 classroom in School of Health Sciences is about 4 minutes walk.
- Look ahead to your left on entering the foyer and go up the spiral staircase on the left hand side of the foyer.
- Take the corridor between the two mentioned facilities
- Turn left at the top of the stairs and follow the corridor
- At the end of the corridor turn right following the signs to School of Health Sciences Reception.
- Turn left before the coffee bar.
- On your left you will see lifts and next to them stairs- please go to C floor.
- On leaving the lift or staircase turn left and follow the corridor around C1052 lecture theatre, you will find C1072 on your left as marked on C floor map
- 

**ENTERING AT SCHOOL OF HEALTH SCIENCES ENTRANCE (A floor)**

- This is the shortest route to C1072
- Go ahead at entrance- On your left you will see lifts and next to them stairs- please go to C floor.
- On leaving the lift or staircase turn left and follow the corridor around C1052 lecture theatre, you will find C1072 on your left as marked on C floor map

