

## Going pink! - October is Breast Cancer Awareness month



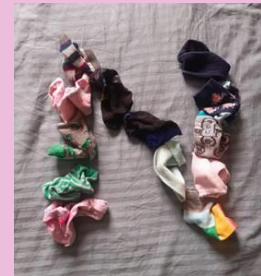
October is Breast Cancer Awareness Month, and NBCRC, together with other charities and organisations across the UK, will be raising awareness of breast cancer and highlighting the vital work taking place to detect and treat the disease.

NBCRC will engage with people of Nottingham and beyond, to talk about breast cancer, share information about our ground breaking research, and update you on the latest opportunities for you to support us.

We have a variety of activities planned throughout the month, from public talks (details below), to catching up with some of our current fundraisers, to finding out how you can take part in our challenges next year (have you ever fancied doing a fire walk, or maybe running the London Marathon?). To keep up to date with all this and more, visit [nott.ac.uk/breastcancerawarenessmonth](http://nott.ac.uk/breastcancerawarenessmonth) or contact us at [supportus@nottingham.ac.uk](mailto:supportus@nottingham.ac.uk).



We will also be going out on social media, challenging you to be as creative as you can and to share your images of our logo letter 'N', using #NBCRC so we can find and share them! N is for Nottingham and NBCRC, and throughout the month we would like to spread the word about NBCRC and what we're doing. So get your thinking caps on! Our starter for you is opposite – maybe you can get creative with Strava art on your next run, or challenge your barista to create an N on the top of your next coffee. Or maybe you can weave in a Nottingham link – the choice is yours!



Due to COVID-19 our annual breast cancer awareness event is replaced by a number of online events:

### ONLINE PUBLIC SEMINAR

*Hear about the research you are funding*  
Tues 6 Oct 9-11am

Your donations to NBCRC have now funded a fabulous 6 pilot grants! Each grant funds 12 months of novel research into a particular aspect of breast cancer. In this public session, researchers leading these projects will each give a short talk outlining what they are studying and how this will help us to understand and better treat the disease.

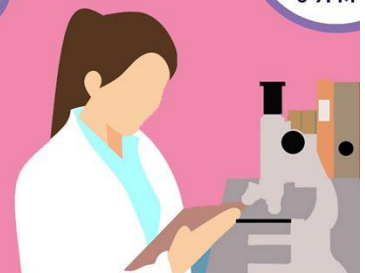
Register on Eventbrite to receive the meeting link  
<http://bit.ly/NBCRCAwarenessEvent>

### **N** PUBLIC SEMINAR

Wed  
14 Oct  
6-7PM

**What is 'breast cancer research' and how do we do it in Nottingham?**

**Dr Sarah Storr**

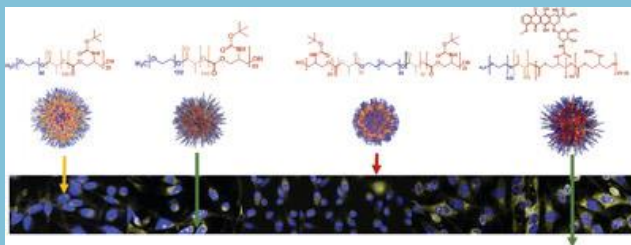


Ever wondered what goes on in the day to day work of a breast cancer research scientist? Join us for this free online public seminar.

Register on Eventbrite to receive the meeting link  
<http://bit.ly/WhatIsBreastCancerResearch>

Two recent papers published by NBCRC members featured in Wiley's hot topics:

### Functionalized Block Co-Polymer Pro-Drug Nanoparticles with Anti-Cancer Efficacy in 3D Spheroids and in an Orthotopic Triple Negative Breast Cancer Model



Polymer pro-drugs show enhanced penetration into 3D triple negative breast cancer cells compared to the relevant free drug and retard tumor growth in an orthotopic breast cancer model.

<https://onlinelibrary.wiley.com/doi/10.1002/adtp.202000103>

### Synthesis of Passerini-3CR Polymers and Assembly into Cytocompatible Polymersomes

<https://onlinelibrary.wiley.com/doi/full/10.1002/marc.202000321>

## NBCRC welcomes new Steering Group members

The NBCRC Steering Committee has recently welcomed two new members. Here they introduce themselves and their particular areas of interest.



Miss Georgette Oni

### Miss Georgette Oni

I am one of a handful of Plastic and Reconstructive Surgeons whose practice is largely devoted to breast surgical oncology. My focus is primarily on integrated patient care and the patient experience particularly in relation to partial and total breast reconstruction. Clinically translatable research is important in bridging basic science/laboratory based findings with tangible patient outcomes.



Ruth Parks

### Ruth Parks

I am a Clinical Research Fellow and PGR student working under the supervision of Professor Cheung and Dr Green. My research is looking at the unique biology of primary breast cancer in older women. I am a General Surgery registrar in the East Midlands and have taken time out of my training programme to complete my PhD. I currently hold research fellowships from Nottingham Hospitals Charity and the Royal College of Surgeons of England.

Ruth joins the committee as Associate member representative (non-voting)

Further details, and information about the research interests of our other members can be found on the NBCRC website at <https://www.nottingham.ac.uk/research/groups/nottinghambreastcancerresearchcentre/meet-our-members/index.aspx>

## Well done!

Congratulations to Lutfi Alfarsi who successfully defended his PhD titled 'Development of a clinically relevant subclassification of luminal breast cancer related to response to endocrine therapy' under the supervision of Dr Andy Green and Prof Emad Rakha.



Congratulations also to Radhika Aiyappa who successfully defended her PhD titled TARGETING DNA REPAIR AND HYPOXIA TO IMPROVE RADIORESPONSE IN BREAST CANCER' under the supervision of Professors Stewart Martin and Srinivasan Madhusudan.



**NBCRC Members** - Don't forget our virtual research event for members takes place on 7 and 8 Oct, 9-11am.

We have a great program of 10 speakers over the 2 days, so make sure you get online and hear what they have to say.

## HOW TO GIVE

Every little bit helps. **100% of every penny given goes directly to our research.**

If you would like to donate, please visit: <https://tinyurl.com/y7xyj4na>

### CONTACT US:

[nbcrc@nottingham.ac.uk](mailto:nbcrc@nottingham.ac.uk)  
[www.nottingham.ac.uk/go/nbcrc](http://www.nottingham.ac.uk/go/nbcrc)  
0115 7485158

### FOLLOW US:



[Facebook.com/NottmBreastCancerResearchCtr](https://www.facebook.com/NottmBreastCancerResearchCtr)

[Twitter.com/NottmBCRC](https://twitter.com/NottmBCRC)