

# Study in Taiwan

Education Division  
Taipei Representative Office in the UK



教育部

Ministry of Education  
Republic of China (Taiwan)



# Living in Taiwan



## Tradition meets Modernity

Taiwan has a vibrant, multicultural environment. Cosmopolitan urban centres, stunning nature reserves, traditional indigenous culture, and food delicacies.



## Safe society and convenient living environment

Taiwan is the 5<sup>th</sup> best expat destination in the world according to InterNation Expat Insider's survey. Ranked 2<sup>nd</sup> in overall Quality of Life index, 1<sup>st</sup> in Health & Wellbeing & Travel subcategories. Ranked top 5 in Safety and Friendliness for 5 years in a row.



## Traditional Mandarin characters & culture

Taiwan continues to use traditional Mandarin character forms. Learners can more fully appreciate Mandarin language and Taiwanese culture across the centuries.

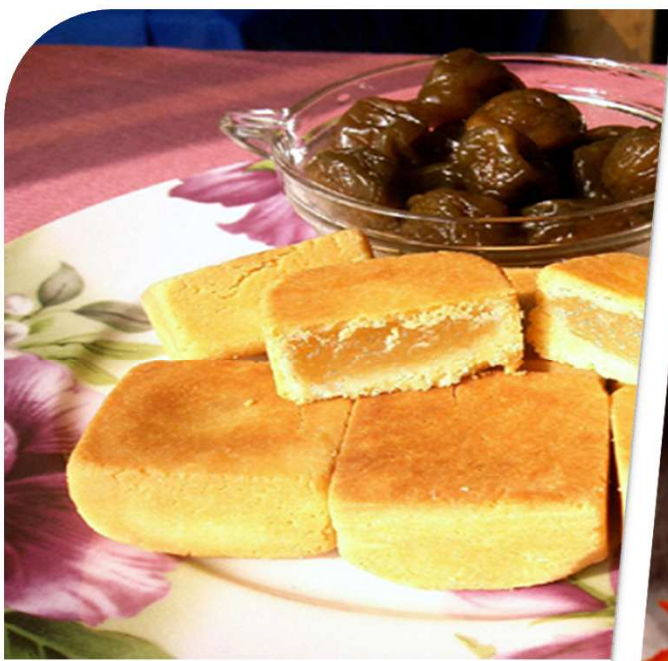
Study in Taiwan











# Scholarship Programmes



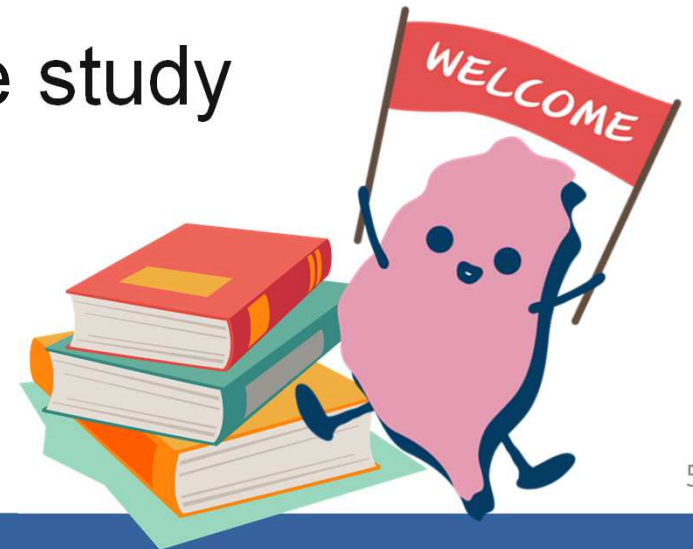
## **TAIWAN SCHOLARSHIP**

For degree study in Taiwan



## **HUAYU ENRICHMENT SCHOLARSHIP**

For Mandarin Chinese language study  
in Taiwan







# Taiwan Scholarship



# Taiwan Scholarship



## Monthly Stipends

- Undergraduate: TWD \$15,000 / month  $\approx$  £375, 4 years
- Master: TWD \$20,000/month  $\approx$  £500, 2 years
- PhD: TWD \$20,000/month  $\approx$  £500, 4 years



## Waiver of Tuition Fee

- up to TWD 40,000 per semester

University Tuition Fee in TW  
Public: about TWD \$40,000 / semester  
Private: about TWD \$75,000 / semester



# Eligibility



- **UK Passport-holder**
- - **High-school diploma (A-level or equivalent)**
  - **Post-secondary degree(s);**
- **Excellent academic record**

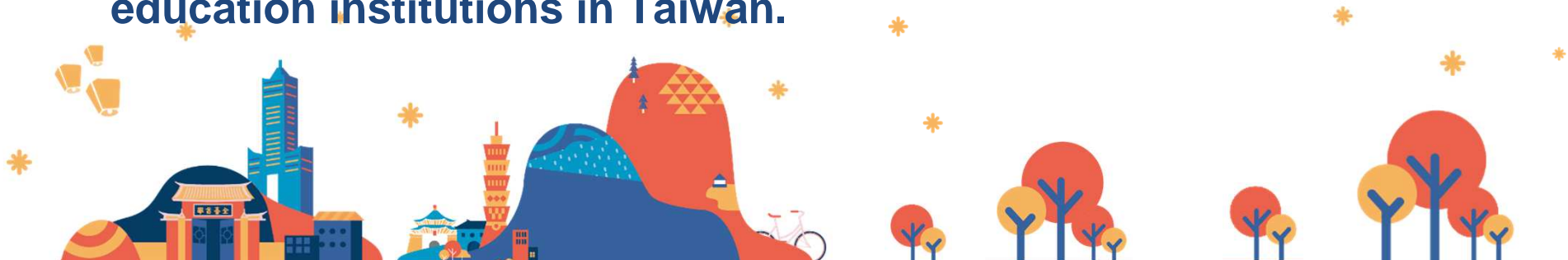




# Disqualification



1. R.O.C. nationals / overseas Chinese students.
2. Already studying at a university/college in Taiwan (unless about to graduate and pursuing further study).
3. Already studied in Taiwan for degree of the same level.
4. Exchange or dual/joint degree students.
5. Received the Taiwan Scholarship for five years in total already or will exceed the five-year limit.
6. Had previous Taiwan Scholarship or Huayu Enrichment Scholarship from the MOE revoked.
7. Will receive other scholarship/subsidy from the Taiwan government or education institutions in Taiwan.



# Application Process



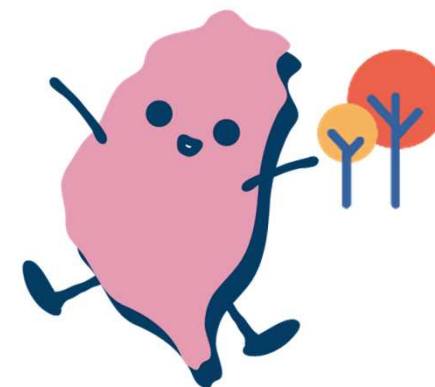
## Contact

Virginia Galgani

Education Division, Taipei Representative Office

Email : [virginia@mofa.gov.tw](mailto:virginia@mofa.gov.tw)

Website: [https://www.roc-taiwan.org/uk\\_en/post/10006.html](https://www.roc-taiwan.org/uk_en/post/10006.html)



# Applying for Admission



## (1) Apply for Chinese-Taught Programmes

Pass the “Test of Chinese as a Foreign Language” (TOCFL)

**Band B or above.**

Hold in Feb/Mar  
In London

## (2) Apply for All-English Programmes :

- Check the programme is included in the 'English-taught Programme Reference List'
- Request the university to issue an official document confirming the course is taught fully in English







## Standardised Chinese language proficiency tests developed by Taiwan

| Level              |                | Indicative Course Hours<br>In non-Chinese-speaking areas | Vocabulary<br>Base | CEFR      |
|--------------------|----------------|--|--------------------|-----------|
| <b>Band Novice</b> |                | 60-240 hours   | 300                |           |
| <b>Band A</b>      | Level 1        | 240-480 hours  | 500                | A1        |
|                    | Level 2        | 480-720 hours  | 1000               | A2        |
| <b>Band B</b>      | <b>Level 3</b> | <b>720-960 hours</b>                                     | <b>2500</b>        | <b>B1</b> |
|                    | Level 4        | 960-1920 hours   | 5000               | B2        |
| <b>Band C</b>      | Level 5        | 1920-3840 hours  | 8000               | C1        |
|                    | Level 6        | More than 3840 hours                                     | 8000               | C2        |





# Huayu Enrichment Scholarship (HES)





## Monthly Stipends

➤ **25,000 NTD ≈ £650**



## Duration

➤ **Short-term course: 3, 6, 9 months**  
Between Sept. 2024 and August 2025





# Eligibility



- **UK Passport-holder**
- **High-school diploma (A-level or equivalent)**
- **Above the age of 18 years old**
- **Excellent academic record**



# Disqualification



1. R.O.C. nationals / overseas Chinese students.
2. Currently studying Mandarin in Taiwan.
3. Have studied a degree programme in Taiwan.
4. Already received an HES or a Taiwan Scholarship in the past.
5. Exchange student to Taiwan.
6. Currently receiving financial benefits from the Taiwan government or another educational institution.



# Application Process



Deadlines vary

**By 31<sup>st</sup> March**

End of April

June



Apply for admission to a language centre

Applications submitted to **BACS**

Result announced

Provide Admission Letter

## Contact:

**The British Association for Chinese Studies, BACS**

Email: [bacs.huayuscholarship@gmail.com](mailto:bacs.huayuscholarship@gmail.com)





# Other Opportunities



# Year Abroad Programme



## Find a Partner University in Taiwan

- Year Abroad Programmes + Mandarin courses
- Duration up to 1 year



## Apply for Subsidy from the MOFA

- Taiwan- Europe Connectivity Scholarship
- University to University Cooperation





# MOE Short Term Research Awards



## For Foreign PhD student or Postdoctoral Research Fellow

- To undertake short-term research in Taiwan
- Duration: from 2 to 6 months
- PhD Student: \$25,000 NTD/month  
Postdoctoral: \$40,000 NTD/month

 Economy Class  
Round-Trip Airfare



## Application Process

- Find a host university in Taiwan
  - Submit application by 30th Sept.
- 



# Reference



Ministry of the Interior  
National Immigration Agency  
Republic of China (Taiwan)



Taiwan Scholarship and  
Huayu Enrichment Scholarship  
Program Office



外交部領事事務局

BUREAU OF CONSULAR AFFAIRS, MINISTRY OF FOREIGN  
AFFAIRS, REPUBLIC OF CHINA (TAIWAN)

Bureau of Consular Affairs



Taiwan Fellowships  
and Scholarships



# Reference



- **Mandarin Learning**



全球華語文教育專案辦公室  
Office of Global Mandarin Education

Office of Global  
Mandarin Education



TOCFL  
Mock Test



- **Youth Mobility**



臺灣華語教育資源中心  
Taiwan Mandarin Educational Resources Center



Let's  
be friends

Youth Travel in Taiwan

壯遊體驗學習網



# Contact Us!



More information on the TRO website:



**Marc Kai Tsou, Assistant Director**  
**Virginia Tianxin Galgani, Education Officer**

020 7436 5888

[london@mail.moe.gov.tw](mailto:london@mail.moe.gov.tw)

[virginia@mofa.gov.tw](mailto:virginia@mofa.gov.tw)



# Q&A

Thank you!