



University of
Nottingham
UK | CHINA | MALAYSIA

Welcome to Beeston

Your handy guide to
living in the community



Watch Beth
and Ben walk
you through
this guide
here:



Contents

Introduction	2
Welcome from your Community Officer	3
Welcome from your Students' Union	3
Moving in checklist	4
Your role as a housemate & a neighbour	5
SU Advice and how to get in touch	6
Broxtowe Borough Council	7
Binformation and recycling	8
Bin Collection guide	9
Volunteering and Fundraising	10
Nottinghamshire Police	11
Community Engagement	12
Outsmart the opportunists	13
Safety tips from Nottinghamshire Fire & Rescue Service	14
Sustainable travel	15
Community Engagement Ambassadors	16
British Heart Foundation	18
Mental Health & Wellbeing Support	19
Key contacts	20



Introduction

You are now part of a **mixed community of people**, and this brings about certain roles and responsibilities that are very different to living in halls of residence.

We've put together this guide to **help support you** during your time living in the community, with lots of advice on how to be a **good neighbour, get involved and make a positive impact** on your local area.

Beeston is a brilliant place to live, work and study and we want you to **make the most of your time** while you're in this great town.

Welcome from your Community Officer

Hi, my name is Poppy and I'm your Community Officer for the next academic year.

Elected by the student body, I represent you on issues such as housing, transport, and safety when communicating with the University, the council and other local authorities.

This guide contains some advice about living in the local community and signposts you towards where you can seek advice and support for community related matters should you need it.

Enjoy your time living off campus, you'll have a great year! If you have any questions or problems, don't hesitate to send me a message.

Poppy Read-Pitt Community Officer

@uonsu_community



Hello!

We're your Students' Union

We're an independent, student-led organisation that represents your needs, protects your rights and makes sure your voice is heard. Led by a team of elected SU Officers, we're a vibrant community 38,000 strong, made up of everyone from first-year to PhD students, SU staff and volunteers. The good news is, you're automatically a member when you join the University of Nottingham!



Visit our website to find out more
su.nottingham.ac.uk

Moving in checklist

Take this handy checklist with you when you move in, and check off each item once it's done.

- Have you got your signed tenancy agreement and keys to get in?
- Have you sorted a parking permit while you move your belongings from your car to your digs?
- Locked your car and house while you're moving goods?
- Checked the property for marks/scuffs/damage, and taken date-stamped photos?
- Have you reviewed and amended the inventory by the deadline and kept a copy? Make sure it accurately describes the property and its contents.
- Does everything work? If anything's broken, let the landlord or agent know (ideally in writing)
- Have you recorded the gas, electric and water meter readings and contacted the suppliers?
- Do you know where your water stop tap and electrical fuse box are?
- Have you considered how you would get out in the event of a fire?
- Are your belongings insured?
- Do you know the local bin collection details?
- Introduced yourself to your neighbours?



Your role as a housemate & as a neighbour

Your role as a housemate

Here are some day-to-day practicalities to help you have the best time in your university house:

Create a rota. You could sit down together to create a rota of all the chores and tasks the whole household will have responsibility for. When something isn't quite right, try to avoid passive aggressive notes and revenge tactics; it's always important to talk to each other!

Spend time together. When you move in, try to organise something social that involves everyone in the house – maybe a movie night or making homemade pizzas together.

Communicate your boundaries. It's worth discussing with your new housemates what your different boundaries and expectations are to avoid conflict later on. Try to consider that everyone comes from different lifestyles and family experiences! Talk about how people feel about sharing food/kitchen utensils, cleanliness, visitors and noise levels.

If things escalate, please contact SU Advice to talk through the issues

Your role as a neighbour

Here's how you can be considerate of neighbours:

Say hello! If you're friendly and approachable, you're much more likely to have a positive relationship with your neighbours.

Ordering a taxi? Remember to ask the driver not to sound their horn when they arrive and wait inside for the taxi to arrive to avoid noisy gatherings on your doorstep.

Heading out for the night?

Be considerate of sleeping residents and keep the noise down as you walk into town and head home at the end of the night.

Going out with alcohol? It's not permitted to drink alcohol on the streets of Nottingham. Don't let your drink get poured down the drain, leave it at home!

Hosting? Always speak to neighbours and those living close by if you plan on having a few friends round, check it is okay with them. House parties particularly effect people in the community with work or school the next day. Please keep in mind that large, loud and late house parties are discouraged and any complaints may be passed onto the Police, Council and University.

Your Students' Union Advice team

Students' Union Advice provide free, impartial advice and information to all University of Nottingham students. Independent from the University, the Advice team is made up of permanent members of Students' Union staff and our service is completely confidential.

We provide information and advice on a wide range of issues affecting students such as:



Housing advice – house hunting, contracts, deposits, issues with landlords, disrepair, disputes with housemates etc



Money advice – funding, debt, budgeting, benefits and utility/council tax bills etc



Course advice – extenuating circumstances, academic appeals, complaints, student code of discipline etc

Get in touch

E: suadvice@nottingham.ac.uk

T: 0115 846 8730

Office: C floor, Portland Building, University Park

You can find out more information about our service at su.nottingham.ac.uk/advice



Broxtowe
Borough
COUNCIL

Broxtowe Borough Council Supporting students

Broxtowe Borough Council is your local authority and as a citizen of Beeston you have access to a whole host of information and services:

- Bin collections
- Waste and recycling
- Clean and green campaign
- Reporting environmental issues
- Housing – private landlords and tenants
- Crime, safety and emergencies
- Community and living
- Your local councillors
- Parks and open spaces
- Events

To access all this information

Visit broxtowe.gov.uk and twitter.com/broxtowebc for the latest news and events.

Report any bin or road issues here:



Email the Private Sector Housing Team at psh@broxtowe.gov.uk to report any housing or landlord issues.

Binformation and recycling



- Keep on top of your waste and use the correct bin
- Download your bin calendar so you don't miss collection day
- Take your bins off the street as soon as they've been emptied
- Support the environment by recycling as much as possible

Find all the information you need by scanning the QR code:



Takeaway? We won't.

Do not put food waste in your recycling bin

Waste and Recycling

BIN COLLECTION



THESE ITEMS GO IN YOUR:

**GREEN
LIDDED BIN**



**BLACK
LIDDED BIN**



**BROWN
LIDDED BIN***



**RED
LIDDED BIN****



*Garden waste collection is a subscription service. For further information including how to subscribe visit www.broxtowe.gov.uk/gardenwaste.

**Red-lidded glass bins are available for a one-off charge.

www.broxtowe.gov.uk

Volunteering and fundraising

Karnival supports a range of local, national and international charities as well as campaigns like Movember. They put the fun in fundraising, running events throughout the year such as fashion shows, charity sports tournaments and society collaborations like Take You Out with NSTV.

Karnival is perhaps most famous for organising amazing charity challenges, and this year is no exception! UoN students can sign up to tackle the UK Three Peaks Challenge, trek through the stunning Moroccan Atlas Mountains or even go all the way to Tanzania to trek to the infamous Kilimanjaro - all to fundraise for this year's amazing charities. If you're interested in any of these challenges, please get in touch via Instagram or email.

As well as fundraising, Carnival also advertises a wide range of local volunteering opportunities, and will help you find one that suits you. Check out their volunteering page at uonsu.com/volunteering

**It's easy to get started,
just get in touch with
Karnival to find out more:**

Email: karni@uonsu.com

Facebook: [@NottsKarni](https://www.facebook.com/NottsKarni)

Instagram: [@nottinghamkarnival](https://www.instagram.com/nottinghamkarnival)



Karnival volunteers with members of UoN Men's Football at the end of term food bank drive in March

Get involved with Volunteering at your Students' Union. We offer both in-house and external opportunities.

For our in-house opportunities, you can:

- Take part in our larger volunteering Programmes such as Welcome Week, Global Buddies and, Student Events Team

- Join our Student Led Community Projects. These are student led projects that aim to benefit the wider community such as: PhabSoc, Souprunners, Headucate.



- Try one of our one-off (taster) volunteering sessions throughout the year.

We also work with external charities and organisations who want to offer volunteering opportunities to our students. You can find these on our website!



Welcome from Nottinghamshire Police

Hi, I'm the Policing Inspector Mike Ebbins and I cover the Broxtowe area - including Beeston.

First and foremost, we want you to enjoy your time in Nottingham. We know how exciting university is and how good it feels to have some responsibility and independence. With that in mind, I would ask that you respect the local residents who live alongside you and treat them as you would your own neighbours at home.

I hope that during your time here you never need to call us. However, if you are ever in a position where you need police support, you can contact us via the following:

Call **101** for non-emergency matters or enquiries

Call **999** in an emergency

You can also report non-emergencies online on the Nottinghamshire Police Report webpage.



Community Engagement

The University of Nottingham's Community Engagement Department is part of the 'Student Living' division and is made up of a small team of permanent staff. We work with students, local authorities, police and a wide range of other stakeholders to ensure students have the opportunity to positively contribute to the place they live, work and study. This is achieved through a variety of local activities, events, projects and initiatives to support community cohesion. We have a wealth of information, advice and guidance on our webpages and promoted through social media, give us a follow.



Our team are here to help you make the most of living in your local community. **Scan the QR code** to find out more.



Neighbourhood Helpline

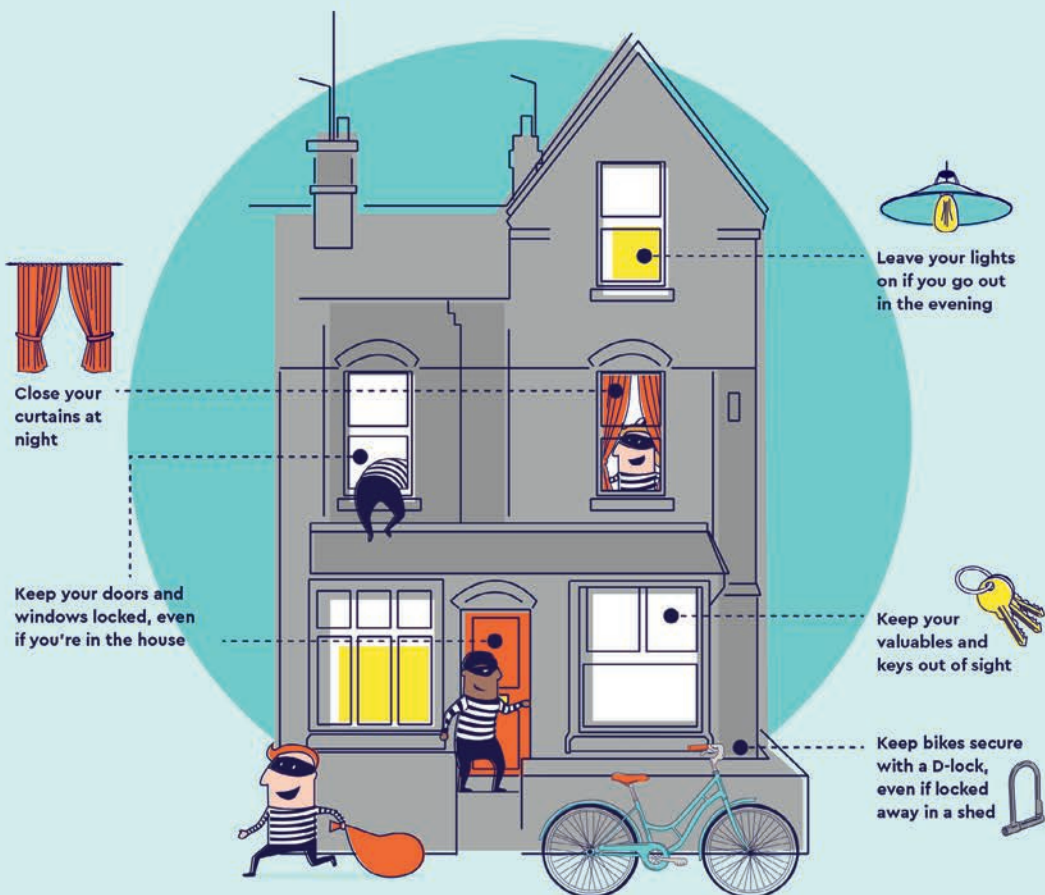
The University of Nottingham is committed to doing everything we can to provide a safe and supportive environment for everyone. Nottingham is a pleasant and inclusive place to study and work but, as with any community, issues can crop up.

Getting in Touch You can call the Neighbourhood Helpline on **0115 846 8666**. Messages are quickly dealt with, but this isn't an emergency helpline. You can email **communityengagement@nottingham.ac.uk** or scan this QR code.



Outsmart the opportunists

Keep your stuff safe, whether you're at home, out for the evening or on holiday.



Safety tips from Nottinghamshire Fire and Rescue Service

Don't silence your smoke alarms:

- Never remove batteries or cover up smoke alarms.
- Speak to the landlord/letting agent if alarms aren't working or others tamper with them.

Cooking up a storm:

- Never leave cooking unattended.
- Avoid cooking after a night out and after drinking alcohol as this can impair your senses and movement.

Show fire the door:

- Remember that fire doors are there for a reason.
- Never prop fire doors open.
- Never remove a fire extinguisher to use as a door stop.



@nottsfire



@nottsfire



@nottsfire



@nottsfirs



Sustainable travel

Nottingham has great public transport links with a fantastic bus and tram network so there's no need to bring your car. Parking is extremely limited for residents in Nottingham and on our campuses. If you do have to bring your car to University, you may need to buy a parking permit.

Taxi

Sometimes a taxi is the best option.

The SU has joined forces with DG Cars to bring you the **Safe Taxi Scheme**.

In an emergency, you can call **0115 950 0500** stating you wish to book a taxi on the UoN Safe Taxi Scheme and they will get you home safely.

Download the new NUDG app today bit.ly/nudgapp



Buy before you board

No tram ticket?
That's a £70 fine.

Buy your ticket or validate your pass or smartcard at the machines before you travel to avoid the £70 penalty fare notice.



Community Engagement Ambassadors

The Community Engagement Ambassador scheme is back after a very successful pilot year. In the academic year 22/23, twelve current students were employed to support community cohesion initiatives in Lenton and Radford. This year, the scheme is expanding; more Ambassadors are being employed and they'll now be working in Dunkirk and Beeston too.

The Ambassadors' aims remain the same: improving awareness of sustainability amongst students through better household recycling, improving neighbourhood safety through a variety of crime reduction campaigns, building positive and more longstanding relationships in

the community between all residents, and supporting Nottingham's Carbon Neutral 2028 ambition.

They work up to 8 hours a week, mainly offering proactive advice to residents when issues are identified.

Make sure you say hi if you see them and feel free to ask them any questions you have about living in the community!



Get in touch!



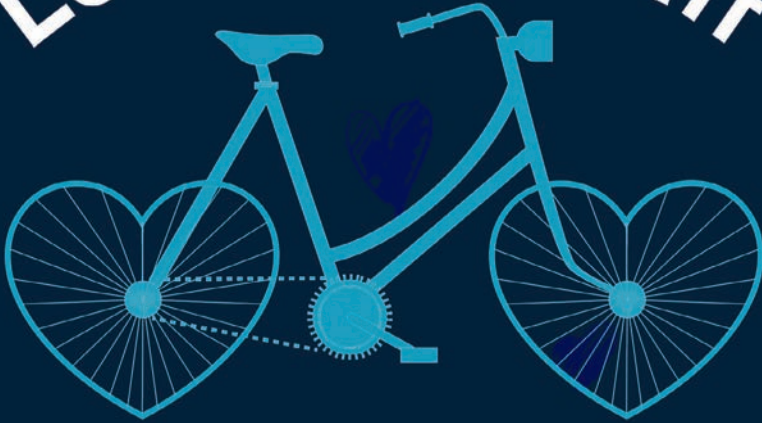


University of
Nottingham
UK | CHINA | MALAYSIA

nott.ac/loveyourstuff



Love your stuff



University of
Nottingham
UK | CHINA | MALAYSIA

Stay safe together



Stick together to enjoy a safe night out.
Don't leave your friends.

Don't need it? Donate it.



Your unwanted stuff could power lifesaving research instead of cluttering up your cupboards. Here's what we can and can't accept at our drop-off points.

We can take ✓



Clothes



Jackets



Accessories



Shoes



Books



Small working electricals

We can't take ✗



Duvets



Pillows



Broken or dirty items



Food



Knives

Just dig it out, bag it up and bring it down to one of our drop-off points.

#PackForGood



**British Heart
Foundation**



Mental Health & Wellbeing Support at the University of Nottingham

Being at university can be exciting but there may be times when you struggle with the demands of studying or life in general.

These services can help support and signpost you to the right service.

Support & Wellbeing Service

First point of contact for support. The team will offer practical advice on a wide range of issues and help you find the right support service.



Report and Support

If you or someone you know has experienced or witnessed an incident, you can tell us anonymously or ask to speak to an advisor.



ResX

The Residential Experience (ResX) team support for you in your halls of residence and partnership accommodation sites.



Is a digital mental health service free to University of Nottingham staff and students. Register with your academic email address.



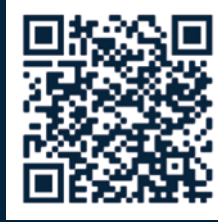
For tips, information and resources visit HealthyU



Key contacts:



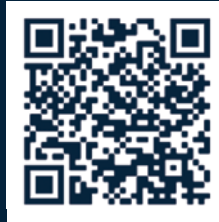
SU Advice



Bin Collections



Community Engagement



Broxtowe Borough Council



su.nottingham.ac.uk

Follow us:

Twitter:

@UoN_Community

Instagram:

@uoncommunityengagement

TikTok:

@uoncommunityengagement



**University of
Nottingham**
UK | CHINA | MALAYSIA



With thanks to all of our partners
including the Students' Union

All the information is correct at the time of writing,
however please keep up to date with any changes

